

COLUMBUS, MISSISSIPPI

HI-ILS or LOC Z RWY 31C

LOC I-TBB 108.7	APCH CRS 315°	Rwy Idg 12,004	8001
		TDZE 213	218
		Arpt Elev 218	218

[USAF]

COLUMBUS AFB (KCBM)

- T** * When ALS inop, increase RVR to 40, vis to $\frac{3}{4}$ mile.
 ** When ALS inop, increase vis to $1\frac{1}{4}$ mile.
 † When ALS inop, increase vis to $1\frac{3}{8}$ mile.



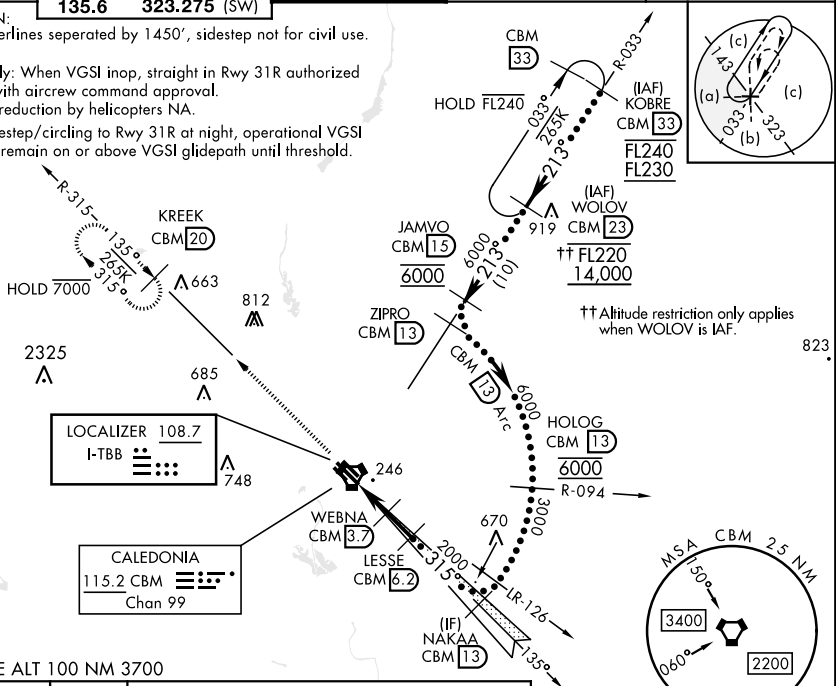
MISSED APPROACH: Climb heading 315° to intercept the VOR/TAC CBM R-315 outbound to KREEK (CBM R-315/20) and hold. Maintain 4000.

ATIS ★	APP CON ★		TOWER ★	GND CON ★	CINC DEL ★
115.2 273.5	126.075	239.25 (N)	126.65 379.925	121.9 275.8	269.55
	134.55	350.3 (SE)			
	135.6	323.275 (SW)			

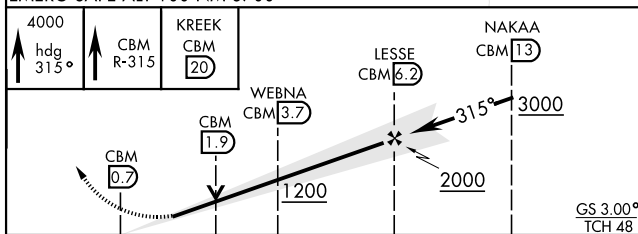
*** CAUTION:
Rwy centerlines separated by 1450', sidestep not for civil use.

USAF Only: When VGSI inop, straight in Rwy 31R authorized at night with aircrew command approval.
 Visibility reduction by helicopters NA.

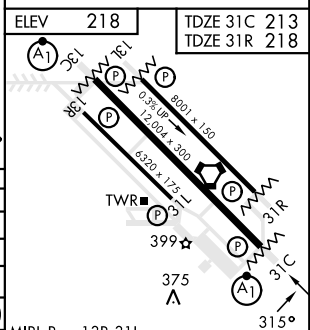
When sidestep/circling to Rwy 31R at night, operational VGSI required, remain on or above VGSI glidepath until threshold.



EMERG SAFE ALT 100 NM 3700



	3 NM	2.5 NM	
CATEGORY	C	D	E
S-ILS 31C *	413/24	200 (200-½)	
S-LOC 31C **	640/40	427 (500-¾)	
SIDESTEP *** RWY 31R	640-1¼	422 (500-1¼)	
C CIRCLING	740-1½ 522 (600-1½)	880-2 662 (700-2)	1 240-3 1022 (1100-3)
LOCAL ALTIMETER, WITHOUT LAST STEPDOWN FIX			
S-LOC 31C †	720/55	507 (600-1)	
SIDESTEP *** RWY 31R	760-1½	542 (600-1½)	
C CIRCLING	760-1½ 542 (600-1½)	880-2 662 (700-2)	1 240-3 1022 (1100-3)



MIRL Rwy 13R-31L	315°
HIRL Rwy 13C-31C, 13L-31R	
FAF to MAP 5.5 NM	

Knots	120	140	160	180	200
Min:Sec	2:45	2:21	2:04	1:50	1:39

COLUMBUS, MISSISSIPPI

33° 39' N-88° 27' W

COLUMBUS AFB (KCBM)

Amdt 2 21 APR 22

HI-ILS or LOC Z RWY 31C

SC-4, 10 JUL 2025 to 07 AUG 2025

SC-4, 10 JUL 2025 to 07 AUG 2025