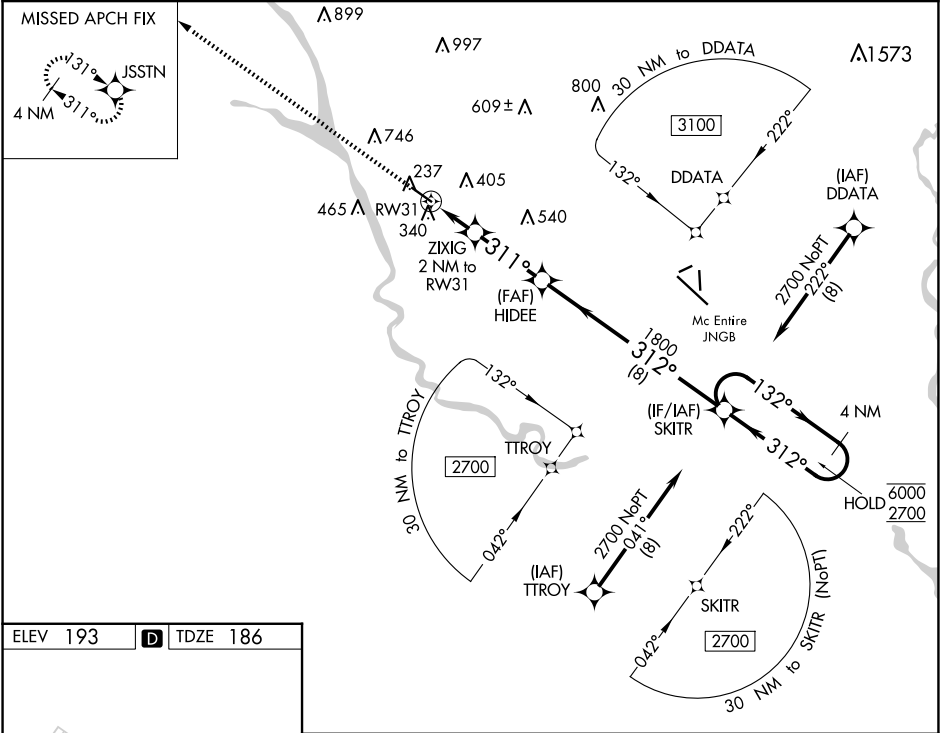


WAAS CH 42742 W31A	APP CRS 311°	Rwy Idg TDZE 186 Apt Elev 193	4599
--	------------------------	---	-------------

RNAV (GPS) RWY 31
JIM HAMILTON L B OWENS (CUB)

RNP APCH. ▼ Rwy 31 helicopter visibility reduction below ¾ SM NA. For uncompensated Baro-VNAV systems, LNAV/VNAV NA below -6°C or above 54°C.		MISSED APPROACH: Climb to 2700 direct JSSTN and hold.	
ASOS 118.675	COLUMBIA APP CON 133.4 285.6	CLNC DEL 124.4	UNICOM 123.075 (CTAF) 0



ELEV 193 **D** TDZE 186

REIL Rwy 13 and 31 0
MIRL Rwy 13-31 0

2700	JSSTN	VGSI and RNAV glidepath not coincident (VGSI Angle 3.00/TCH 20).		
*LNAV only.		ZIXIG 2 NM to RW31	HIDEE 1800	SKITR 4 NM Holding Pattern
RW31		*1.4 NM to RW31	311°	312°
1.4 NM		0.8	2.9 NM	8 NM
CATEGORY	A	B	C	D
LPV DA	436-¾		250 (300-¾)	
LNAV/ VNAV DA	551-1		365 (400-1)	
LNAV MDA	640-1	454 (500-1)	640-1¾	454 (500-1¾)

SE-2, 10 JUL 2025 to 07 AUG 2025

SE-2, 10 JUL 2025 to 07 AUG 2025