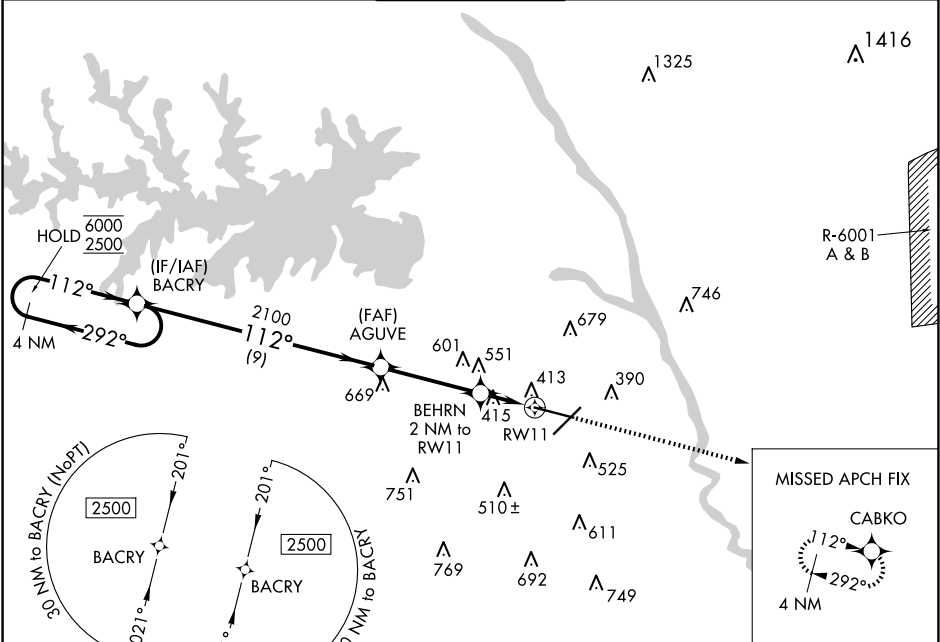


WAAS CH 61014 W11A	APP CRS 112°	Rwy Idg 8601 TDZE 236 Apt Elev 236
--	------------------------	---

RNAV (GPS) RWY 11
COLUMBIA METRO (CAE)

RNP APCH-GPS. ▼ For uncompensated Baro-VNAV systems, LNAV/VNAV ▲ NA below -6°C or above 54°C.		ALSF-2 A	MISSED APPROACH: Climb to 2500 direct CABKO and hold.	
ATIS 120.15	COLUMBIA APP CON 133.4 285.6 (290°-109°) 124.15 338.2 (110°-289°)	COLUMBIA TOWER 119.5 257.8	GND CON 121.9 348.6	CLNC DEL 119.75



4 NM Holding Pattern 6000 ← 292° 2500 → 112° GP 3.00° TCH 59		BACRY	AGUVE 2100	BEHRN 2 NM to RW11	2500 CABKO
9 NM		3.7 NM	0.8	1.2 NM	
CATEGORY	A	B	C	D	
LPV DA	436/18		200 (200-½)		
LNAV/VNAV DA	673/40		437 (500-¾)		
LNAV MDA	680/24	444 (500-½)	680/45	444 (500-¾)	
CIRCLING	740-1 504 (600-1)	860-1 624 (700-1)	1040-2¼ 804 (900-2¼)	1040-2½ 804 (900-2½)	

REIL Rwy 23
TDZ/CL Rwy 11
HIRL Rlys 5-23 and 11-29

SE-2, 10 JUL 2025 to 07 AUG 2025

SE-2, 10 JUL 2025 to 07 AUG 2025