

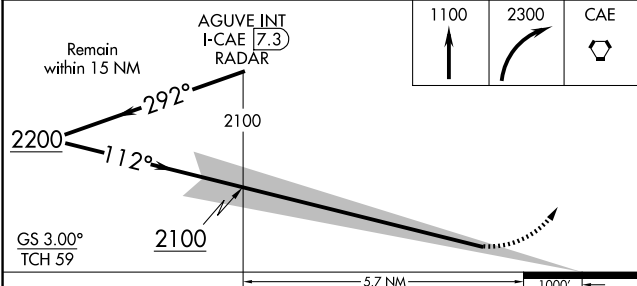
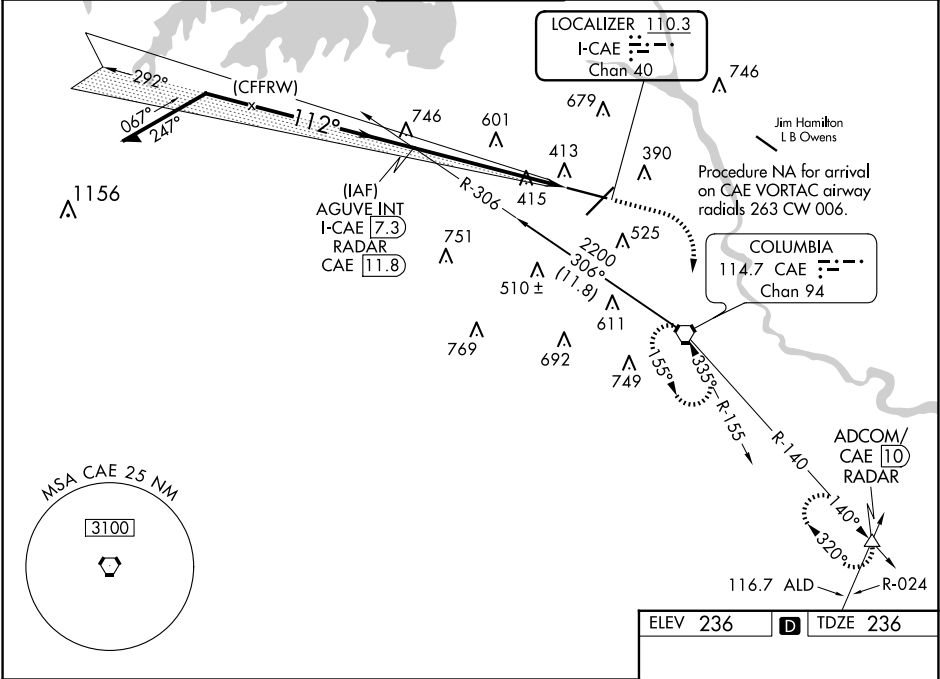
| | | | |
|----------------|-------------|----------|------------|
| LOC/DME I-CAE | APP CRS | Rwy Idg | 8601 |
| 110.3 | 112° | TDZE | 236 |
| Chan 40 | | Apt Elev | 236 |

ILS RWY 11 (CAT II & III)
COLUMBIA METRO (CAE)

ALSF-2

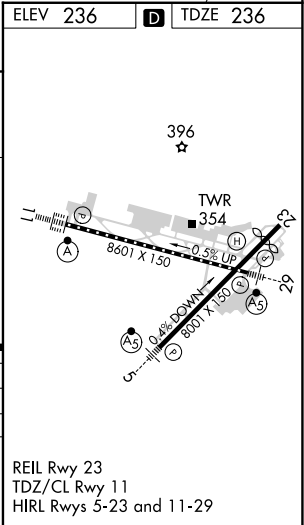
MISSED APPROACH: Climb to 1100 then climbing right turn to 2300 direct CAE VORTAC and hold, continue climb-in-hold to 2300. (TACAN aircraft continue on CAE VORTAC R-140 to ADCOM INT/CAE VORTAC 10 DME and hold NW, right turn, 140° inbound)

| | | | | |
|---------------|---|--------------------|--------------------|---------------|
| ATIS | COLUMBIA APP CON | COLUMBIA TOWER | GND CON | CLNC DEL |
| 120.15 | 133.4 285.6 (290°-109°) 124.15 338.2 (110°-289°) | 119.5 257.8 | 121.9 348.6 | 119.75 |



| | | | | |
|----------|-----------------------------|---|---|---|
| CATEGORY | A | B | C | D |
| S-ILS 11 | CAT II RA 128/12 100 DA 336 | | | |
| S-ILS 11 | CAT III RVR 06 | | | |

CATEGORY II & III ILS-SPECIAL AIRCREW
& AIRCRAFT CERTIFICATION REQUIRED



SE-2, 10 JUL 2025 to 07 AUG 2025

SE-2, 10 JUL 2025 to 07 AUG 2025