

VOR/DME BRK  
**112.5**  
Chan **72**

APP CRS  
**190°**

Rwy Ldg  
TDZE **6187**  
Apt Elev **6187**

VOR RWY 17L

CITY OF COLORADO SPRINGS MUNI (COS)

DME and RADAR required for procedure entry at AFDUC.

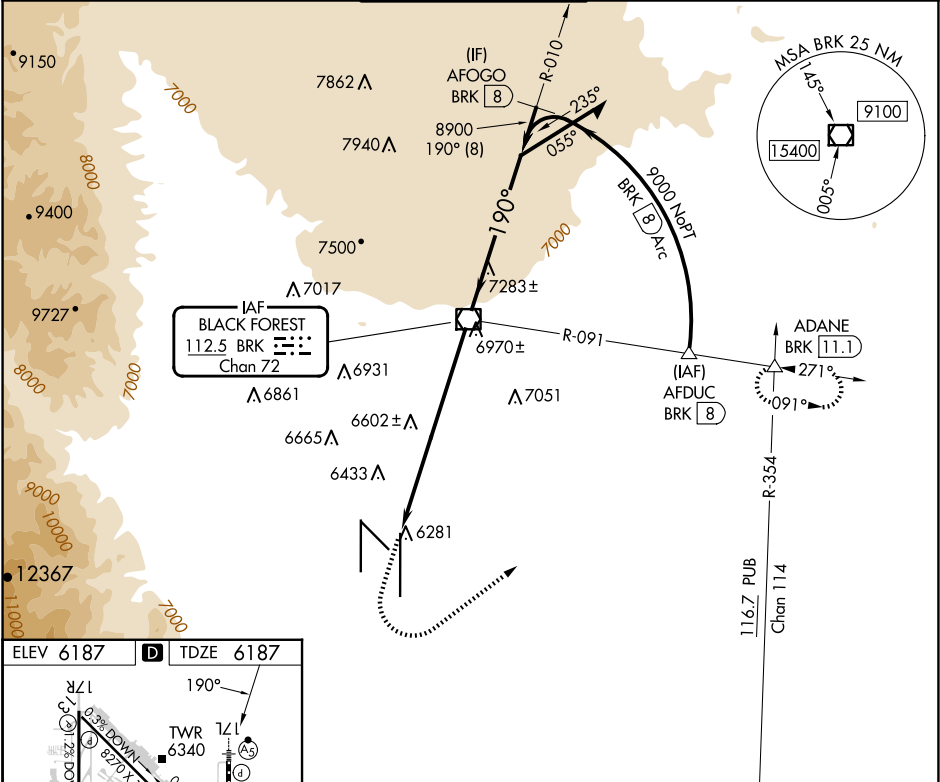
MALSR

MISSED APPROACH: Climb to 7900 then climbing left turn to 9000 on heading 045° and BRK VOR/DME R-091 to ADANE INT/BRK VOR/DME 11.1 DME and hold.

Inop table does not apply.

AS

ATIS <b>125.0 254.3</b>	SPRINGS APP CON <b>124.0 257.875</b>	SPRINGS TOWER <b>119.9 360.6</b>	GND CON <b>121.7 348.6</b>	CLNC DEL <b>134.45 363.125</b>
----------------------------	---	-------------------------------------	-------------------------------	-----------------------------------



ELEV 6187

TDZE 6187

7900

9000

BRK

ADANE

hdg 045°

R-091

△

VGSI and descent angles not coincident (VGSI Angle 3.00/TCH 57).

BRK 8.1

BRK 4.4

BRK VOR/DME

Remain within 10 NM

9200

010°

9200

190°

8900

3.10°

TCH 53

3.7 NM

4.4 NM

CATEGORY	A	B	C	D
S-17L	7440-1¼ 1253 (1300-1¼)	7440-1½ 1253 (1300-1½)	7440-3	1253 (1300-3)
CIRCLING	7440-1¼ 1253 (1300-1¼)	7440-1½ 1253 (1300-1½)	7440-3	1253 (1300-3)