

WAAS CH <b>72800</b> <b>W17B</b>	APP CRS <b>172°</b>	Rwy Ldg TDZE <b>6177</b> Apt Elev <b>6187</b>
--	------------------------	---

RNAV (GPS) Y RWY 17R

CITY OF COLORADO SPRINGS MUNI (COS)

RNP APCH - GPS.

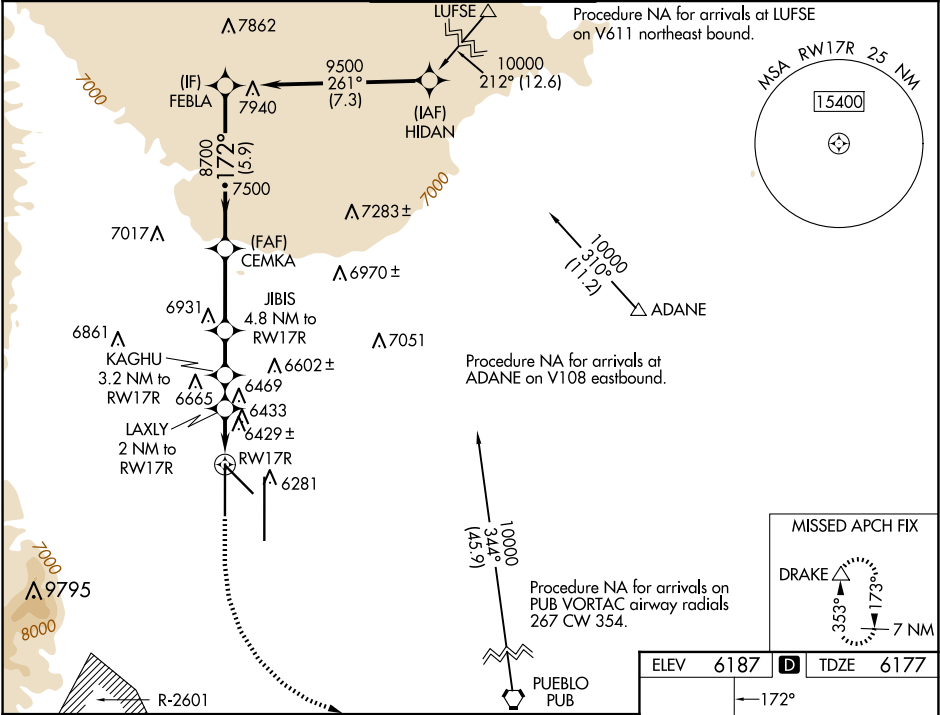
▼

▲

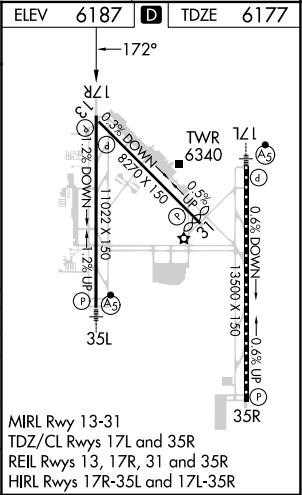
For uncompensated Baro-VNAV systems, LNAV/VNAV NA below -21°C or above 54°C.  
Simultaneous approach authorized with ILS or LOC RWY 17L and ILS RWY 17L (SA CAT I).  
LNAV procedure NA during simultaneous operations. Use of FD or AP providing RNAV track guidance required during simultaneous operations.

MISSED APPROACH: Climb to 7000 then climbing left turn to 9000 direct DRAKE and hold.

ATIS <b>125.0 254.3</b>	SPRINGS APP CON <b>124.0 257.875</b>	SPRINGS TOWER <b>119.9 360.6</b>	GND CON <b>121.7 348.6</b>	CLNC DEL <b>134.45 363.125</b>
----------------------------	---	-------------------------------------	-------------------------------	-----------------------------------



7000 9000 DRAKE		VGSI and RNAV glidepath not coincident (VGSI Angle 3.00/TCH 49).		CEMKA FEBLA	
LAXLY 2 NM to RWY17R		KAGHU 3.2 NM to RWY17R		JIBIS 4.8 NM to RWY17R	
1.4 NM to RWY17R		1.6 NM		3 NM	
1.4 NM		0.6 NM		1.2 NM	
6860		7240		8700	
172°		172°		9500	
GP 3.00°		TCH 55			
CATEGORY	A		B		D
LPV DA	6377/40		200 (200-¾)		
LNAV/VNAV DA	6752-2		575 (600-2)		
LNAV MDA	6680/55	503 (500-1)		6680-1⅓	503 (500-1⅓)
CIRCLING	6740-1 553 (600-1)	6800-1 613 (700-1)	7040-2½ 853 (900-2½)	7260-3 1073 (1100-3)	



SW-1, 10 JUL 2025 to 07 AUG 2025

SW-1, 10 JUL 2025 to 07 AUG 2025