

APP CRS

172°

Rwy Ldg

11022

TDZE

6177

Apt Elev

6187

RNAV (RNP) Z RWY 17R

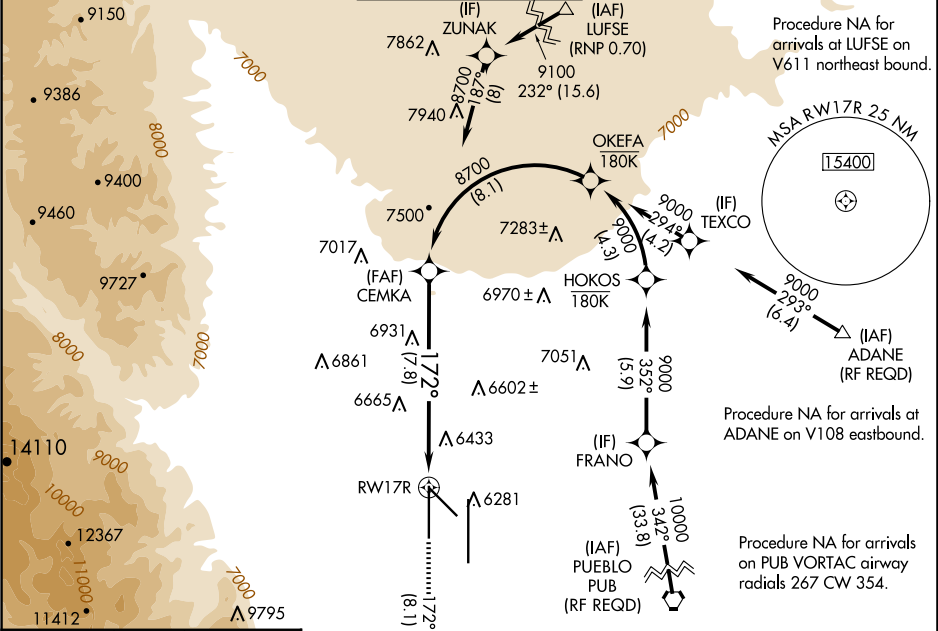
CITY OF COLORADO SPRINGS MUNI (COS)

RNP AR APCH - GPS.

For uncompensated Baro-VNAV systems, procedure NA below -21°C or above 45°C. Simultaneous approach authorized.

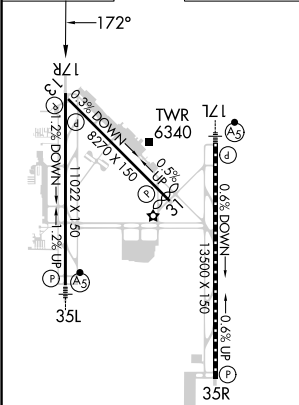
MISSED APPROACH: Climb to 9000 on track 172° to KUSAC and on track 125° to JEMKI and on track 084° to DRAKE and hold.

ATIS 125.0 254.3	SPRINGS APP CON 124.0 257.875	SPRINGS TOWER 119.9 360.6	GND CON 121.7 348.6	CLNC DEL 134.45 363.125
---------------------	----------------------------------	------------------------------	------------------------	----------------------------

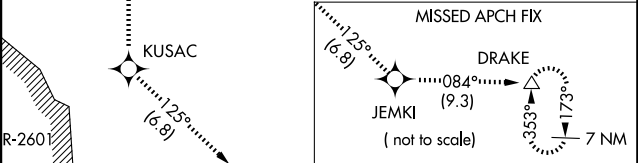


ELEV 6187

TDZE 6177



MIRL Rwy 13-31
HIRL Rws 17R-35L and 17L-35R
REIL Rws 13, 17R, 31 and 35R
TDZ/CL Rws 17L and 35R



9000

KUSAC

tr 125°

JEMKI

tr 084°

DRAKE

tr 172°

VGSI and RNAV glidepath not coincident (VGSI Angle 3.00/TCH 49).

RW17R

172°

8700

GP 3.00° TCH 55

See planview for multiple IF locations.

7.8 NM

CATEGORY	A	B	C	D
RNP 0.22 DA	6659-1 $\frac{1}{8}$	482 (500-1 $\frac{1}{8}$)		
RNP 0.30 DA	6902-2 $\frac{1}{2}$	725 (800-2 $\frac{1}{2}$)		

AUTHORIZATION REQUIRED