
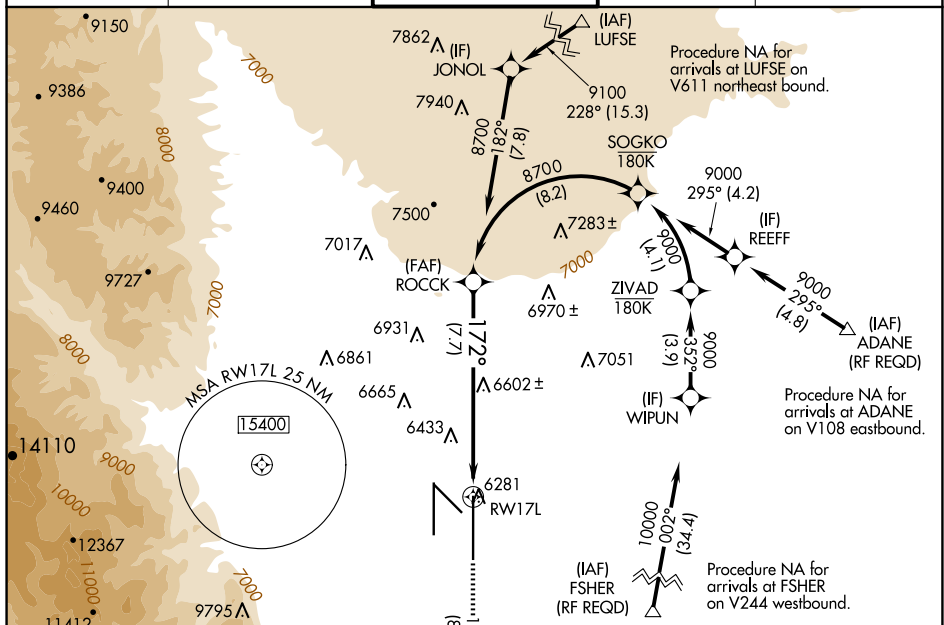


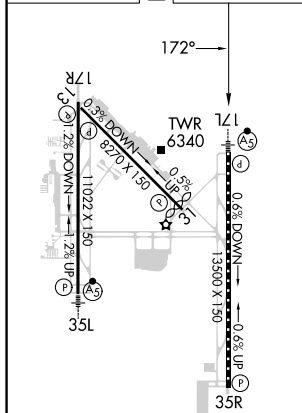
APP CRS 172°	Rwy Ldg 13500 TDZE 6187 Apt Elev 6187
------------------------	--

RNAV (RNP) Z RWY 17L
CITY OF COLORADO SPRINGS MUNI (COS)

RNP AR APCH - GPS. T For uncompensated Baro-VNAV systems, procedure NA below -21°C or above 44°C.		MALSR 		MISSED APPROACH: Climb to 9000 on track 172° to CEGIX and on track 130° to JEMKI and on track 084° to DRAKE and hold.	
ATIS 125.0 254.3		SPRINGS APP CON 124.0 257.875		SPRINGS TOWER 119.9 360.6	
				GND CON 121.7 348.6	
				CLNC DEL 134.45 363.125	



ELEV	6187	D	TDZE	6187
------	------	----------	------	------



MIRL Rwy 13-31
HIRL Rwy 17R-35L and 17L-35R
REIL Rwy 13, 17R, 31 and 35R
TDZ/CL Rwy 17L and 35R

