

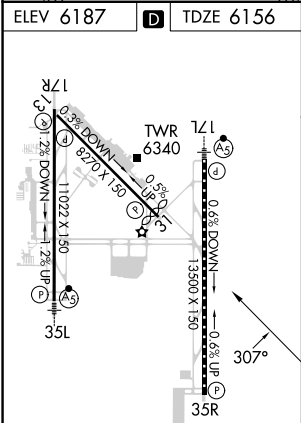
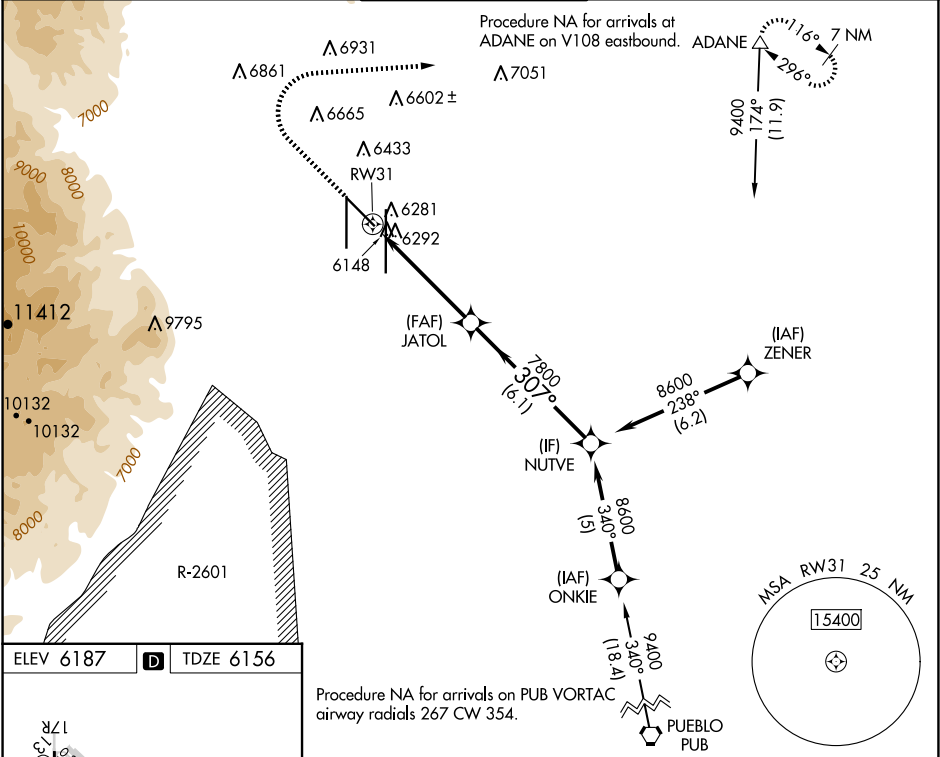
WAAS CH <b>40040</b> <b>W31A</b>	APP CRS <b>307°</b>	Rwy Ldg TDZE Apt Elev	<b>7914</b> <b>6156</b> <b>6187</b>
--	------------------------	-----------------------------	---

RNAV (GPS) RWY 31

CITY OF COLORADO SPRINGS MUNI (COS)

<div><div></div><div>DME/DME RNP-0.3 NA.</div></div>	MISSED APPROACH: Climb to 6700 then climbing right turn to 9000 direct ADANE and hold.
--	--

ATIS <b>125.0 254.3</b>	SPRINGS APP CON <b>124.0 257.875</b>	SPRINGS TOWER <b>119.9 360.6</b>	GND CON <b>121.7 348.6</b>	CLNC DEL <b>134.45 363.125</b>
----------------------------	---	-------------------------------------	-------------------------------	-----------------------------------



MIRL Rwy 13-31  
HIRL Rwy 17R-35L and 17L-35R  
REIL Rwy 13, 17R, 31 and 35R  
TDZ/CL Rwy 17L and 35R

6700		9000	ADANE	NUTVE	
RW31		JATOL		8600	
0.8 NM to RW31		7800		307°	
3.04° TCH 52		6.1 NM			
CATEGORY	A	B	C	D	
LP MDA	6440-1	284 (300-1)	6440-7 <sup>8</sup>	284 (300-7 <sup>8</sup> )	
LNAV MDA	6560-1	404 (400-1)	6560-1 <sup>1</sup> <sub>8</sub>	404 (400-1 <sup>1</sup> <sub>8</sub> )	
<div></div> CIRCLING	6740-1 553 (600-1)	6800-1 613 (700-1)	7040-2 <sup>1</sup> <sub>2</sub> 853 (900-2 <sup>1</sup> <sub>2</sub> )	7260-3 1073 (1100-3)	