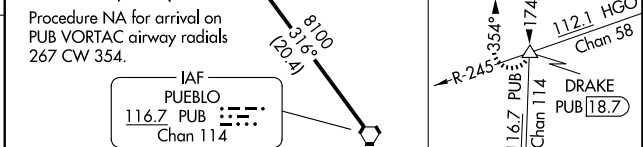


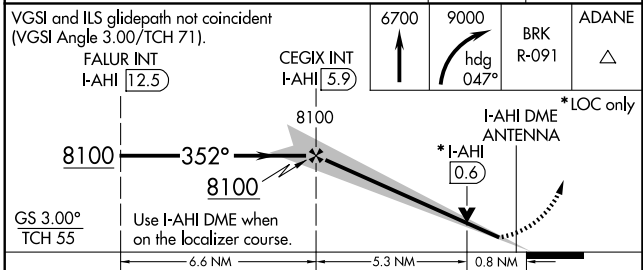
ILS or LOC RWY 35R  
CITY OF COLORADO SPRINGS MUNI (COS)

**MISSED APPROACH:** Climb to 6700 then climbing right turn to 9000 on heading 047° and on BRK VOR/DME R-091 to ADANE INT/BRK 11.1 DME and hold.

Procedure NA for arrival on  
PUB VORTAC airway radials  
267 CW 354.



VGSI and ILS glidepath not coincident  
(VGSI Angle 3.00/TCH 71).



COLORADO SPRINGS, COLORADO CITY OF COLORADO SPRINGS MUNI (COS)  
Amdt 2A 17AUG17 38°48'N-104°42'W ILS or LOC RWY 35R