

LOC I-COS	APP CRS	Rwy Ldg	11022
109.9	352°	TDZE	6075
		Apt Elev	6187

ILS or LOC RWY 35L

CITY OF COLORADO SPRINGS MUNI (COS)

ADF required for LOC only.

▼

RADAR monitoring required when R-2601 in use. For inop ALS, increase S-LOC 35L Cat C/D visibility to RVR 4500.

▲

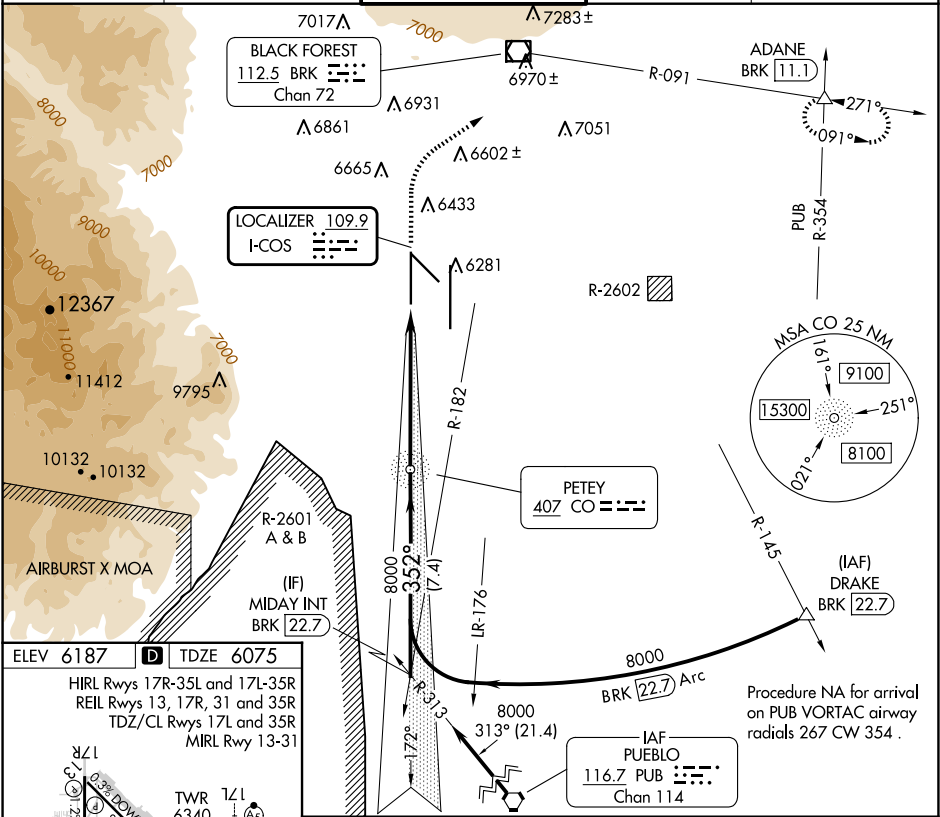
*RVR 1800 authorized with use of FD or AP or HUD to DA.

MALSR

AS

MISSED APPROACH: Climb to 6700 then climbing right turn to 9000 on heading 047° and BRK VOR/DME R-091 to ADANE INT/BRK 11.1 DME and hold.

ATIS	SPRINGS APP CON	SPRINGS TOWER	GND CON	CLNC DEL
125.0 254.3	124.0 257.875	119.9 360.6	121.7 348.6	134.45 363.125



ELEV 6187 **D** TDZE 6075

HIRL Rwy 17R-35L and 17L-35R
REIL Rwy 13, 17R, 31 and 35R
TDZ/CL Rwy 17L and 35R
MIRL Rwy 13-31

FAF to MAP 6 NM

Knots	60	90	120	150	180
Min:Sec	6:00	4:00	3:00	2:24	2:00

MIDAY INT BRK [22.7]	CO NDB 7996	6700 ↑	9000 hdg 047°	BRK R-091	ADANE △
8000	8000	7.4 NM	6 NM		
GS 3.00° TCH 51					
CATEGORY	A	B	C	D	
S-ILS 35L*		6275/24	200 (100-½)		
S-LOC 35L		6340/24	265 (200-½)		
<input checked="" type="checkbox"/> CIRCLING	6740-1 553 (600-1)	6760-1 573 (600-1)	6980-2¼ 793 (800-2¼)	7240-3 1053 (1100-3)	