

LOC/DME I-LPI	APP CRS	Rwy Ldg	13500
109.1	172°	TDZE	6187
Chan 28		Apt Elev	6187

ILS RWY 17L (SA CAT I & II)

CITY OF COLORADO SPRINGS MUNI (COS)

DME or RADAR required for procedure entry.

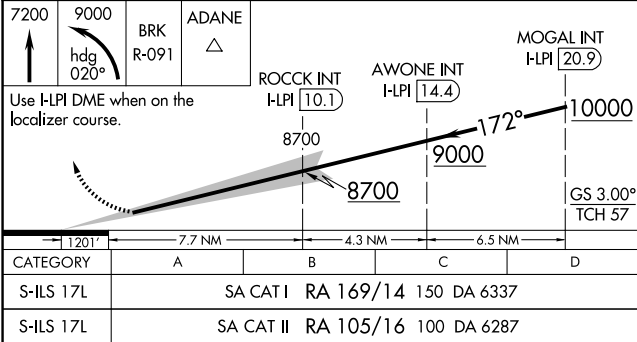
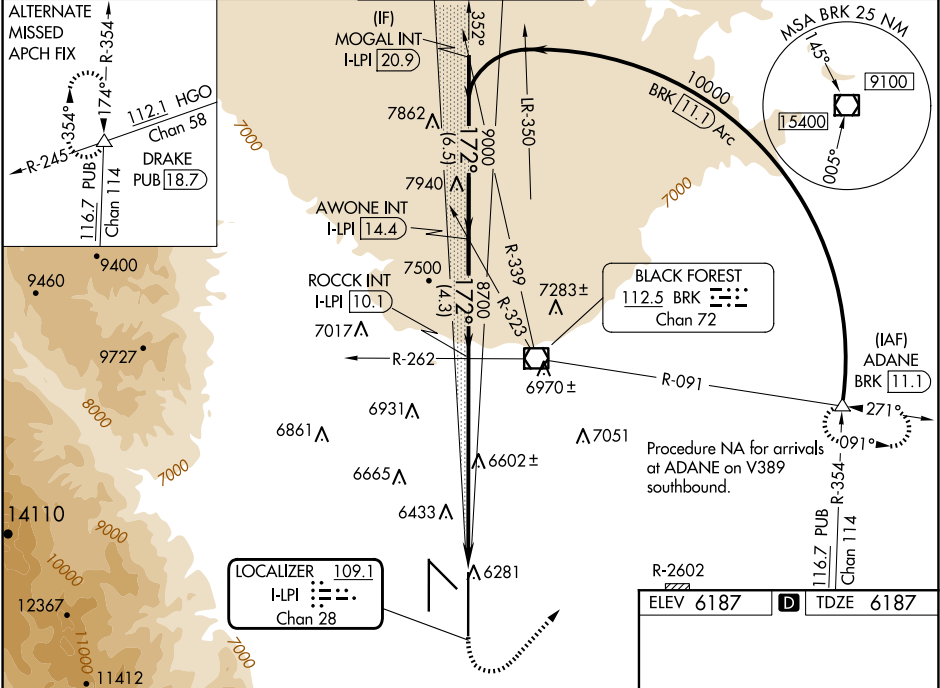
Simultaneous approach authorized with Rwy 17R.

SA CAT I: Required specific OPSPEC, MSPEC, or LOA approval and use of HUD to DH. SA CAT II: Reduced Lighting: Requires specific OPSPEC, MSPEC, or LOA approval and use of autoland or HUD to touchdown.

MALSR

MISSED APPROACH: Climb to 7200 then climbing left turn to 9000 on heading 020° and on BRK VOR/DME R-091 to ADANE INT/BRK VOR/DME 11.1 DME and hold.

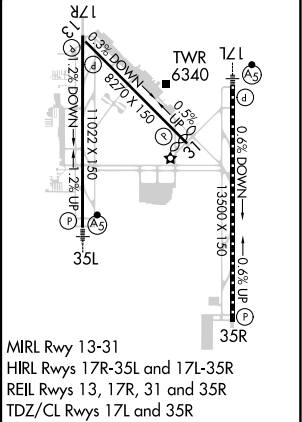
ATIS	SPRINGS APP CON	SPRINGS TOWER	GND CON	CLNC DEL
125.0 254.3	124.0 257.875	119.9 360.6	121.7 348.6	134.45 363.125



CATEGORY	A	B	C	D
S-ILS 17L	SA CAT I	RA 169/14	150	DA 6337
S-ILS 17L	SA CAT II	RA 105/16	100	DA 6287

SA CATEGORY I & II ILS SPECIAL AIRCREW

& AIRCRAFT CERTIFICATION REQUIRED



MIRL Rwy 13-31  
HIRL Rws 17R-35L and 17L-35R  
REIL Rws 13, 17R, 31 and 35R  
TDZ/CL Rws 17L and 35R