

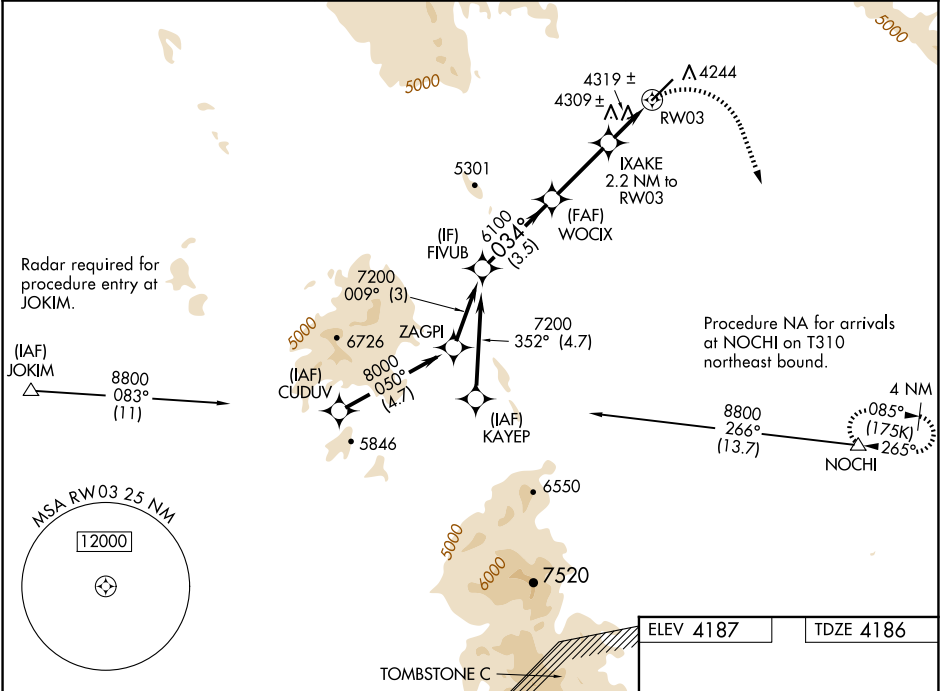
APP CRS 034°	Rwy Ldg	6095
	TDZE	4186
	Apt Elev	4187

RNAV (GPS) RWY 3

COCHISE COUNTY (P33)

RNP APCH - GPS.	
When local altimeter setting not received, use Douglas Bisbee altimeter setting. VDP NA with Douglas Bisbee altimeter setting.	
MISSED APPROACH: Climbing right turn to 8800 direct NOCHI and hold, continue climb-in-hold to 8800.	

AWOS-3PT 119.025	ALBUQUERQUE CENTER 134.45 327.15	UNICOM 122.8 (CTAF) 0
----------------------------	--	---------------------------------



ELEV 4187		TDZE 4186	
FIVUB		NOCHI	
7200		8800	
034°		034°	
6100		5040	
3.5 NM		2.9 NM	
A		B	
1.3 NM		0.9 NM	
C		D	
CATEGORY	A	B	D
LNAV MDA	4560-1	374 (400-1)	NA
CIRCLING	4600-1	4660-1	NA
	413 (500-1)	473 (500-1)	
DOUGLAS BISBEE ALTIMETER SETTING MINIMUMS			
LNAV MDA	4680-1	494 (500-1)	NA
CIRCLING	4720-1	4780-1	NA
	533 (600-1)	593 (600-1)	