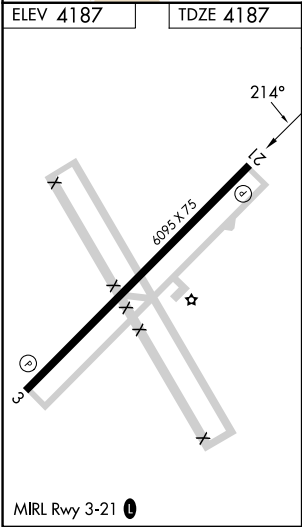
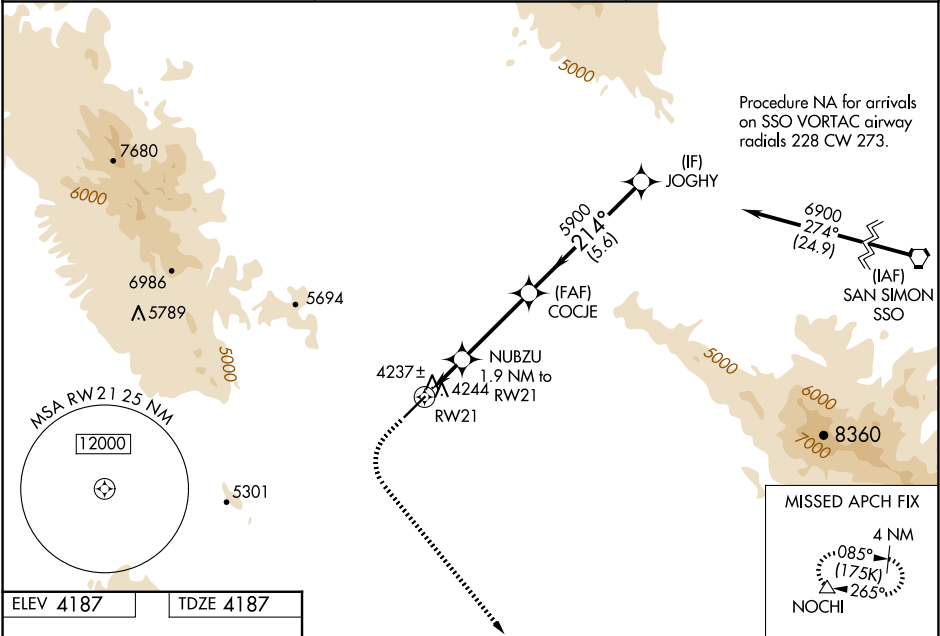


WAAS CH <b>77618</b> <b>W21A</b>	APP CRS <b>214°</b>	Rwy Ldg TDZE Apt Elev	<b>6095</b> <b>4187</b> <b>4187</b>
--	------------------------	-----------------------------	---

RNAV (GPS) RWY 21  
COCHISE COUNTY (P33)

RNP APCH - GPS. Baro-VNAV NA when using Douglas Bisbee altimeter setting. For uncompensated Baro-VNAV systems, LNAV/VNAV NA below -23°C or above 54°C. When local altimeter setting not received, use Douglas Bisbee altimeter setting and increase LPV DA to 4555 feet and all visibilities ¼ SM; increase LNAV/VNAV DA to 4555 feet and all visibilities ¼ SM; increase all MDAs 120 feet.		MISSED APPROACH: Climb to 4600 then climbing left turn to 8800 direct NOCHI and hold, continue climb-in-hold 8800.
AWOS-3PT <b>119.025</b>	ALBUQUERQUE CENTER <b>134.45 327.15</b>	UNICOM <b>122.8 (CTAF) 0</b>



ELEV 4187		TDZE 4187	
4600		8800	
NOCHI		JOGHY	
NUBZU 1.9 NM to RW21		COCJE 5900	
RW21		JOGHY 6900	
0.9 NM		3.4 NM	
1 NM		5.6 NM	
CATEGORY		A	
LPV DA		4437-7/8 250 (300-7/8)	
LNAV/VNAV DA		4437-7/8 250 (300-7/8)	
LNAV MDA		4520-1 333 (400-1)	
CIRCLING		4600-1 413 (500-1)	
		4660-1 473 (500-1)	
		NA	