

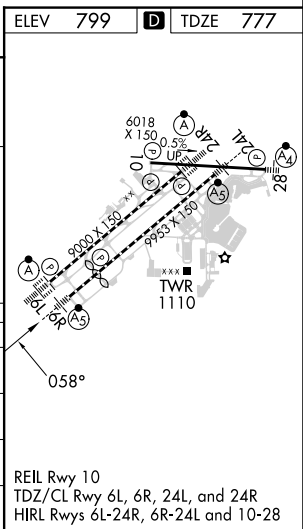
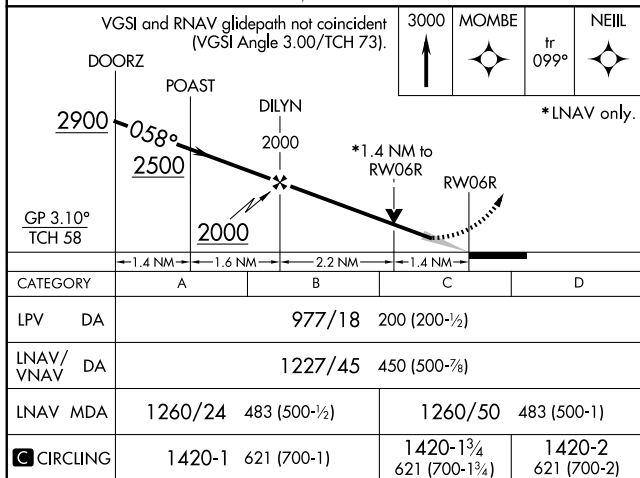
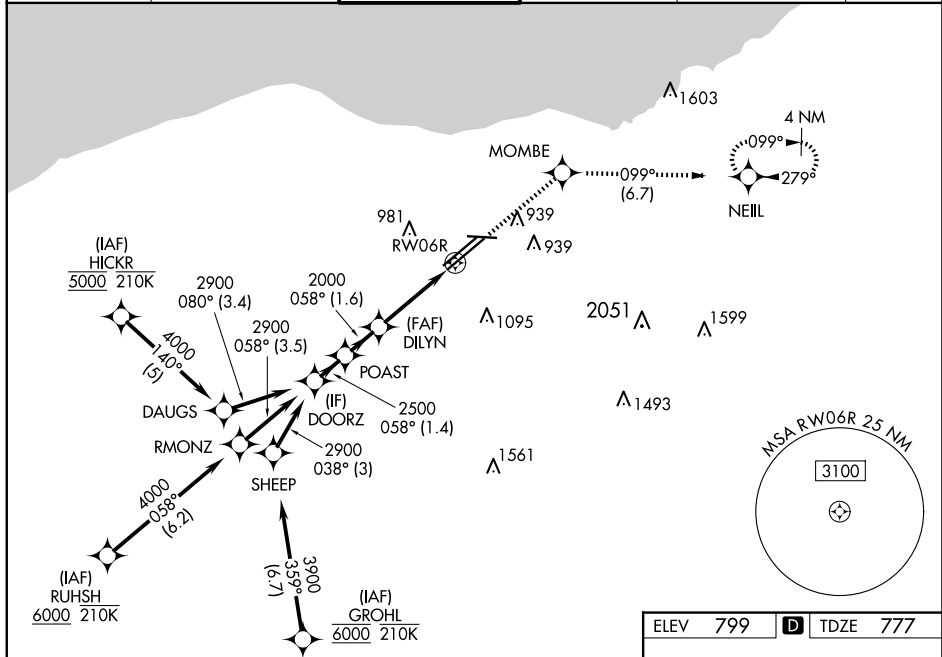


24305

WAAS CH 81806 W06B	APP CRS 058°	Rwy Idg 8029 TDZE 777 Apt Elev 799
--	------------------------	---

RNAV (GPS) Y RWY 6R
CLEVELAND-HOPKINS INTL (CLE)

RNP APCH.				MALSR 		MISSED APPROACH: Climb to 3000 direct MOMBE and on track 099° to NEIII and hold.	
 For uncompensated Baro-VNAV systems, LNAV/VNAV NA below -18°C (0°F) or above 46°C (114°F). Circling Rwy 10 NA at night. For inop ALS, increase LNAV Cats C/D visibility to 1½ SM.							
D-ATIS ARR 127.85 DEP 132.375		CLEVELAND APP CON 126.55 346.325		CLEVELAND TOWER 124.5 273.45		GND CON 121.7 273.45	
						CLNC DEL 125.05 273.45	
						CPDLC	



CLEVELAND, OHIO
Amdt 3 24MAY18

41°25'N-81°51'W

CLEVELAND-HOPKINS INTL (CLE)
RNAV (GPS) Y RWY 6R

EC-2, 10 JUL 2025 to 07 AUG 2025

EC-2, 10 JUL 2025 to 07 AUG 2025