

CLEVELAND, OHIO

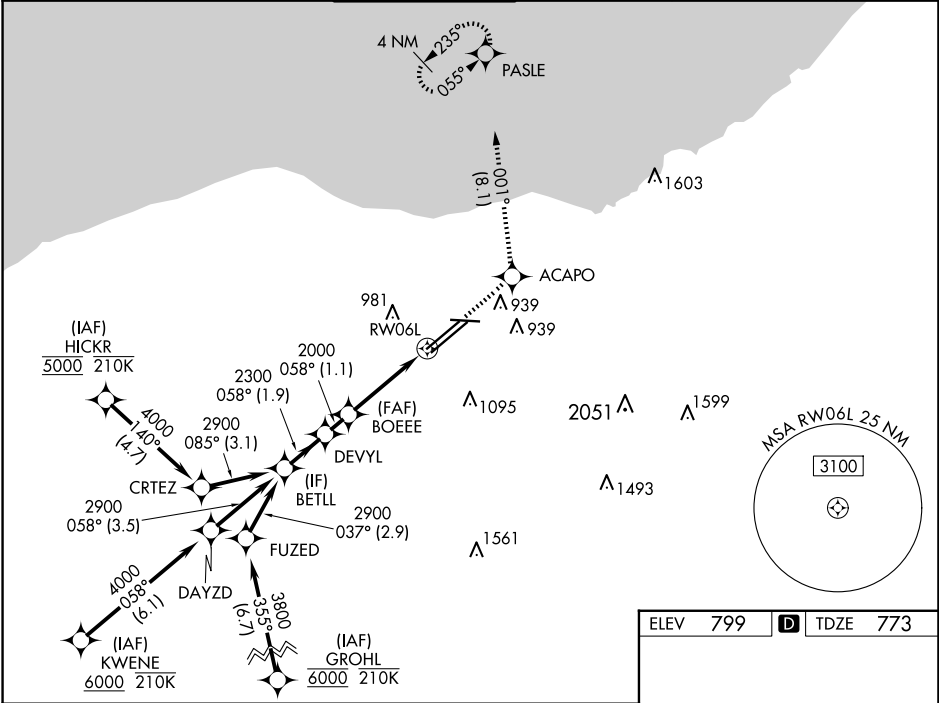
AL-84 (FAA)

24305

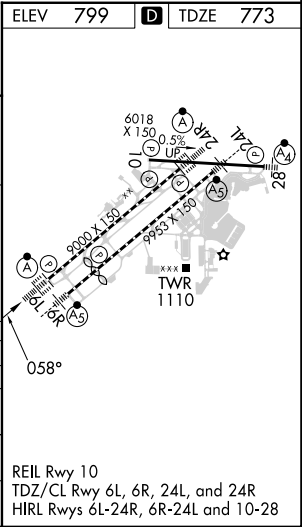
WAAS CH 56204 W06A	APP CRS 058°	Rwy Idg 9000 TDZE 773 Apt Elev 799
--	------------------------	---

RNAV (GPS) Y RWY 6L
CLEVELAND-HOPKINS INTL (CLE)

RNP APCH. ▼ For uncompensated Baro-VNAV systems, LNAV/VNAV NA below -18°C (0°F) or above 54°C (130°F). Circling Rwy 10 NA at night. For inop ALS, increase LNAV/VNAV all Cnts visibility to RVR 5500 and increase LNAV Cnts C/D visibility to 1½ SM.		ALSF-2 ⬆	MISSED APPROACH: Climb to 3000 direct ACAPO and on track 001° to PASLE and hold.		
D-ATIS ARR 127.85 DEP 132.375	CLEVELAND APP CON 126.55 346.325	CLEVELAND TOWER 124.5 273.45	GND CON 121.7 273.45	CLNC DEL 125.05 273.45	CPDLC



VGSI and RNAV glidepath not coincident (VGSI Angle 3.00/TCH 69).		3000	ACAPO	PASLE
BETLL		↑	✧	✧
2900			tr	001°
GP 3.00° TCH 55				
2300				
2000				
1.9 NM		1.1 NM	2.4 NM	1.3 NM
CATEGORY	A	B	C	D
LPV DA	973/18		200 (200-½)	
LNAV/VNAV DA	1120/30		347 (400-⅝)	
LNAV MDA	1260/24	487 (500-½)	1260/50	487 (500-1)
⬢ CIRCLING	1420-1	621 (700-1)	1420-1¾ 621 (700-1¾)	1420-2 621 (700-2)



CLEVELAND, OHIO
Amdt 2A 21JUN18

41°25'N-81°51'W

CLEVELAND-HOPKINS INTL (CLE)
RNAV (GPS) Y RWY 6L

EC-2, 10 JUL 2025 to 07 AUG 2025

EC-2, 10 JUL 2025 to 07 AUG 2025