

CLEVELAND, OHIO

AL-84 (FAA)

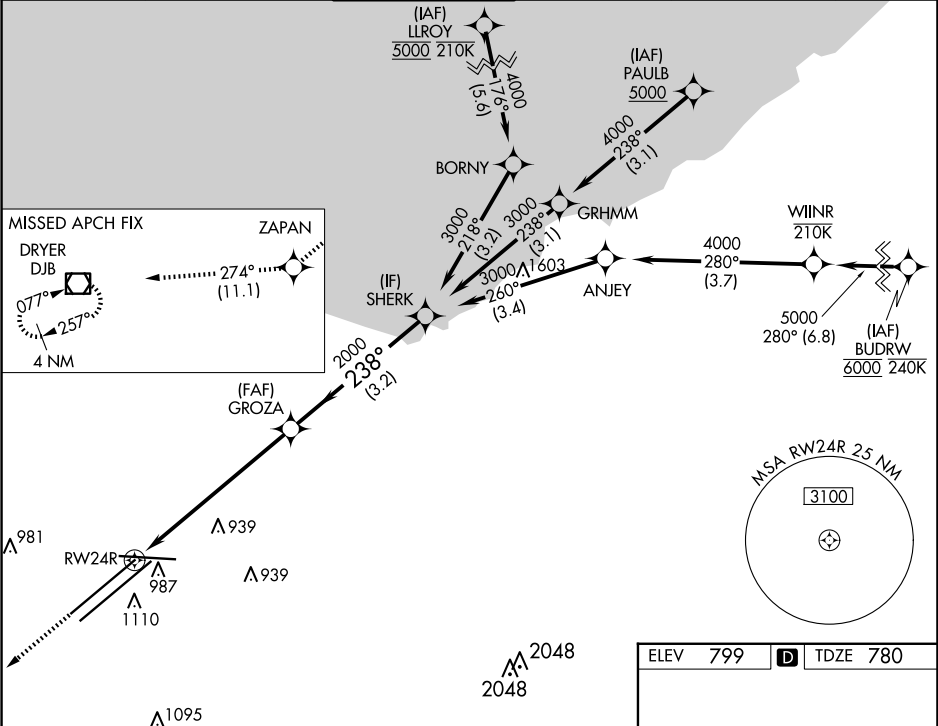
24305

WAAS CH <b>60904</b> <b>W24A</b>	APP CRS <b>238°</b>	Rwy Idg TDZE <b>780</b> Apt Elev <b>799</b>
--	------------------------	---

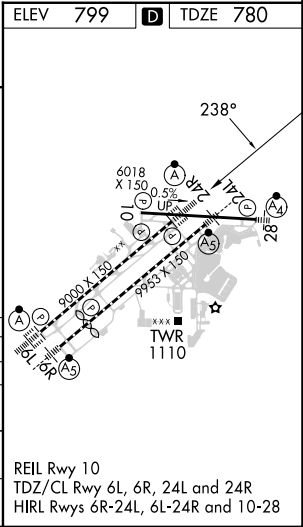
RNAV (GPS) Y RWY 24R  
CLEVELAND-HOPKINS INTL (CLE)

RNP APCH.	ALSIF-2	MISSED APPROACH: Climb to 3000 direct ZAPAN and on track 274° to DJB VOR/DME and hold.
Circling Rwy 10 NA at night. For uncompensated Baro-VNAV systems, LNAV/VNAV NA below -19°C or above 54°C.		

D-ATIS ARR <b>127.85</b> DEP <b>132.375</b>	CLEVELAND APP CON <b>126.55 346.325</b>	CLEVELAND TOWER <b>124.5 273.45</b>	GND CON <b>121.7 273.45</b>	CLNC DEL <b>125.05 273.45</b>	CPDLC
---	--	--	--------------------------------	----------------------------------	-------



3000	ZAPAN	fr 274°	DJB	VGSI and RNAV glidepath not coincident (VGSI Angle 3.00/TCH 65).
*LNAV only.				
CATEGORY	A	B	C	D
LPV DA	980/18		200 (200-½)	
LNAV/VNAV DA	1168/35		388 (400-⅝)	
LNAV MDA	1240/24 460 (500-½)		1240/45 460 (500-⅞)	
CIRCLING	1420-1 621 (700-1)		1420-2 621 (700-2)	



CLEVELAND, OHIO  
Amdt 5 15AUG19

41°25'N-81°51'W

CLEVELAND-HOPKINS INTL (CLE)  
RNAV (GPS) Y RWY 24R

EC-2, 10 JUL 2025 to 07 AUG 2025

EC-2, 10 JUL 2025 to 07 AUG 2025