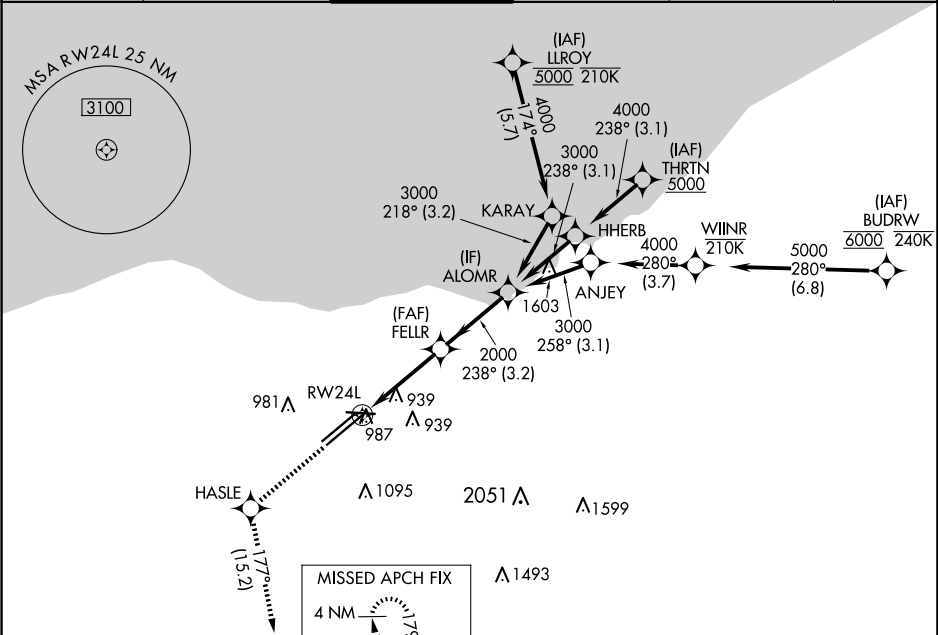


WAAS CH <b>77506</b> <b>W24B</b>	APP CRS <b>238°</b>	Rwy Idg TDZE <b>786</b> Apt Elev <b>799</b>	<b>9953</b>
--	------------------------	---	-------------

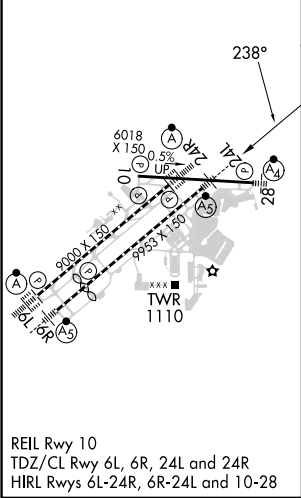
RNAV (GPS) Y RWY 24L

CLEVELAND-HOPKINS INTL (CLE)

RNP APCH. ▼ Circling Rwy 10 NA at night. For uncompensated Baro-VNAV systems, LNAV/VNAV NA below -19°C or above 54°C.		MALSR 	MISSED APPROACH: Climb to 3000 direct HASLE and on track 177° to SAROW and hold.		
D-ATIS ARR <b>127.85</b> DEP <b>132.375</b>	CLEVELAND APP CON <b>126.55 346.325</b>	CLEVELAND TOWER <b>124.5 273.45</b>	GND CON <b>121.7 273.45</b>	CLNC DEL <b>125.05 273.45</b>	CPDLC



ELEV <b>799</b>	<b>D</b>	TDZE <b>786</b>
-----------------	----------	-----------------



3000	HASLE	tr 177°	SAROW	VGSI and RNAV glidepath not coincident (VGSI Angle 3.00/TCH 48).	
*LNAV only.					
GP 3.00° TCH 52					
CATEGORY		A	B	C	D
LPV	DA	986/18		200 (200-½)	
LNAV/ VNAV	DA	1180/35		394 (400-⅝)	
LNAV MDA		1240/24 454 (500-½)		1240/45 454 (500-⅞)	
CIRCLING	1420-1 621 (700-1)		1420-1¾ 621 (700-1¾)		1420-2 621 (700-2)