

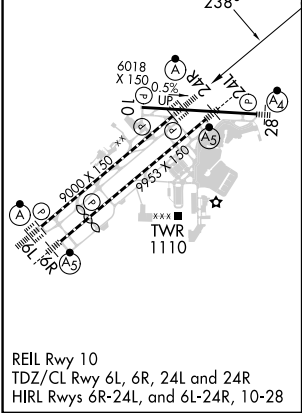
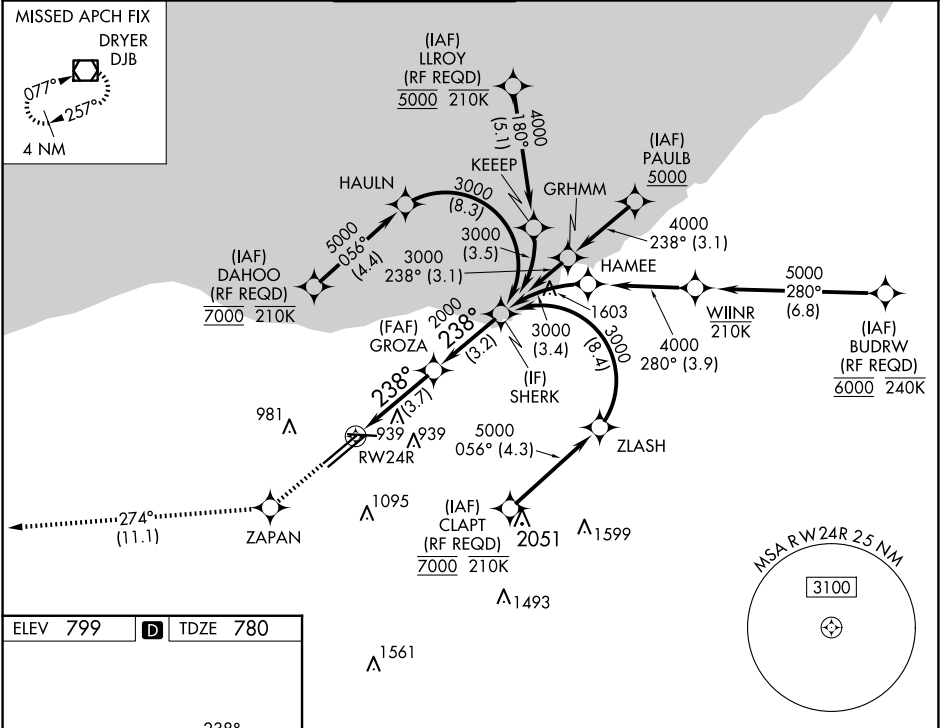
APP CRS	Rwy Idg	9000
238°	TDZE	780
	Apt Elev	799

RNAV (RNP) Z RWY 24R

CLEVELAND-HOPKINS INTL (CLE)

RNP AR APCH.	ALSF-2	MISSED APPROACH: Climb to 3000 direct ZAPAN and on track 274° to DJB VOR/DME and hold.
▼ For uncompensated Baro-VNAV systems, procedure NA below -18°C (0°F) or above 54°C (130°F). For inop ALS, increase RNP 0.13 all Cats visibility to RVR 4500.		

D-ATIS ARR 127.85 DEP 132.375	CLEVELAND APP CON 126.55 346.325	CLEVELAND TOWER 124.5 273.45	GND CON 121.7 273.45	CLNC DEL 125.05 273.45	CPDLC
-------------------------------------	-------------------------------------	---------------------------------	-------------------------	---------------------------	-------



3000	ZAPAN	tr 274°	DJB	VGSI and RNAV glidepath not coincident (VGSI Angle 3.00/TCH 65).
				SHERK
	GROZA	2000	238°	3000
	RW24R	2000		GP 3.00° TCH 55
		3.7 NM	3.2 NM	
CATEGORY	A	B	C	D
RNP 0.13 DA		1064/24	284 (300-1/2)	
RNP 0.30 DA		1176/35	396 (400-3/4)	
AUTHORIZATION REQUIRED				

EC-2, 10 JUL 2025 to 07 AUG 2025

EC-2, 10 JUL 2025 to 07 AUG 2025