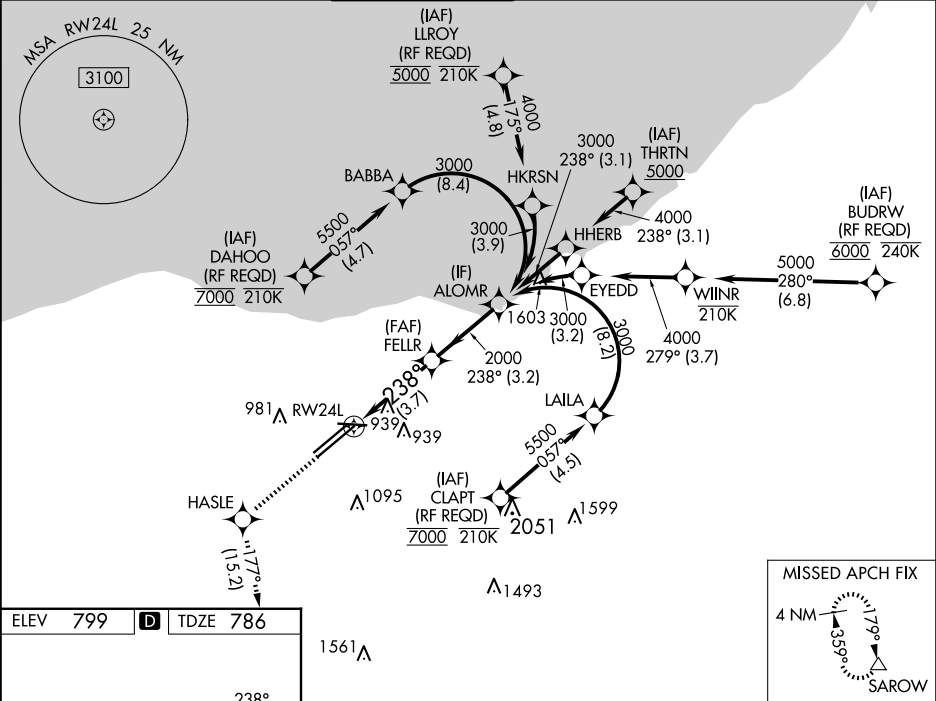


APP CRS	Rwy Idg	9953
238°	TDZE	786
	Apt Elev	799

RNAV (RNP) Z RWY 24L

CLEVELAND-HOPKINS INTL (CLE)

RNP AR APCH.		MALSR	MISSED APPROACH: Climb to 3000 direct HASLE and on track 177° to SAROW and hold.		
▼ For uncompensated Baro-VNAV systems, procedure NA below -18°C (0°F) or above 54°C (130°F). For inop ALS, increase RNP 0.19 all Cts visibility to RVR 5500.					
D-ATIS	CLEVELAND APP CON	CLEVELAND TOWER	GND CON	CLNC DEL	CPDLC
ARR 127.85 DEP 132.375	126.55 346.325	124.5 273.45	121.7 273.45	125.05 273.45	



ELEV 799

TDZE 786

3000 HASLE

tr 177°

SAROW

VGSI and RNAV glidepath not coincident (VGSI Angle 3.00/TCH 48).

FELLR 2000

ALOMR 3000

238°

2000

3.7 NM

3.2 NM

GP 3.00°

TCH 52

CATEGORY	A	B	C	D
RNP 0.19 DA		1140/30	354 (400-¾)	
RNP 0.30 DA		1243/45	457 (500-¾)	

AUTHORIZATION REQUIRED