



CLEVELAND, OHIO

AL-84 (FAA)

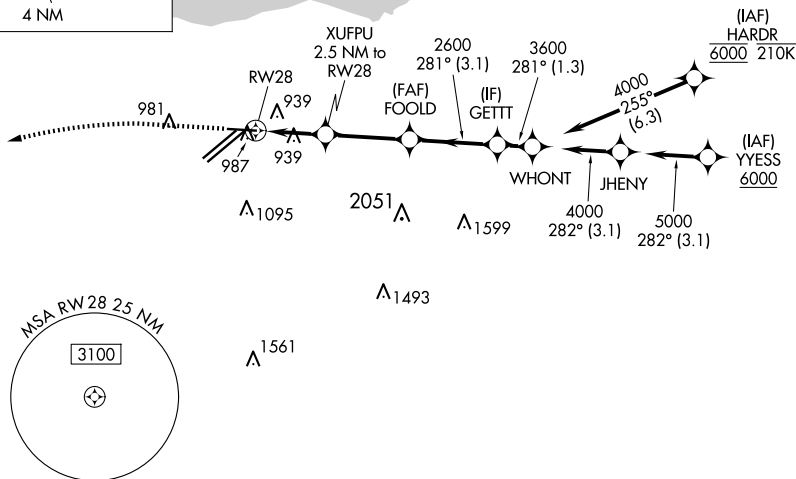
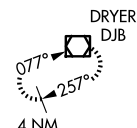
24305

WAAS CH <b>40109</b> <b>W28A</b>	APP CRS <b>281°</b>	Rwy Idg <b>6018</b> TDZE <b>799</b> Apt Elev <b>799</b>
--	------------------------	---

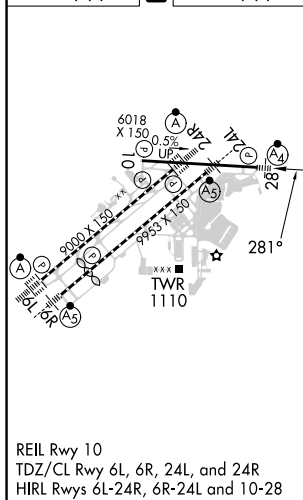
RNAV (GPS) RWY 28  
CLEVELAND-HOPKINS INTL (CLE)

RNP APCH.			MALSF 		MISSED APPROACH: Climb to 1400 then climbing left turn to 3000 direct DJB VOR/DME and hold.	
 For uncompensated Baro-VNAV systems, LNAV/VNAV NA below -18°C (0°F) or above 54°C (130°F). Circling Rwy 10 NA at night. Inop table does not apply to LPV.						
D-ATIS ARR <b>127.85</b> DEP <b>132.375</b>		CLEVELAND APP CON <b>126.55 346.325</b>	CLEVELAND TOWER <b>124.5 273.45</b>	GND CON <b>121.7 273.45</b>	CLNC DEL <b>125.05 273.45</b>	CPDLC

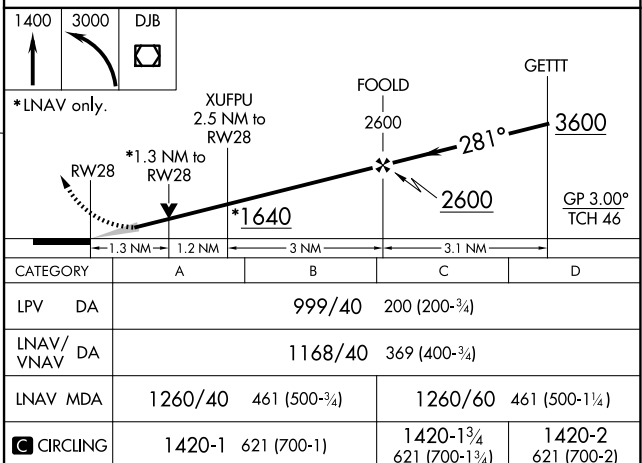
MISSED APCH FIX



ELEV	799	<b>D</b>	TDZE	799
------	-----	----------	------	-----



CLEVELAND, OHIO  
Amdt 3 24MAY18



CLEVELAND-HOPKINS INTL (CLE)  
RNAV (GPS) RWY 28

EC-2, 10 JUL 2025 to 07 AUG 2025

EC-2, 10 JUL 2025 to 07 AUG 2025

41°25'N-81°51'W