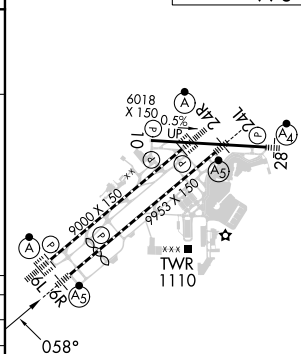
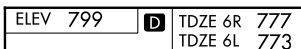


ILS or LOC RWY 6R
CLEVELAND-HOPKINS INTL (CLE)

MISSED APPROACH:
Climb to 1600 then
climbing right turn
to 3100 on CXR
VOR/DME R-265 to
NEIL/CXR 21.5 DME
and hold.

T Circling Rwy 10 NA at night. Simultaneous approach authorized. Simultaneous operations require use of vertical guidance; maintain last assigned altitude until established on glideslope. Inop table does not apply to Sidestep 6L. For inop ALS, increase S-LOC 6R Cats C/D visibility to 1½ SM.

ALTERNATE MISSED
APCH FIX



REIL Rwy 10
TDZ/CL Rwy 6L, 6R, 24L and 24R
HIRL Rwys 6L-24R, 6R-24L and 10-28

EC-2, 10 JUL 2025 to 07 AUG 2025