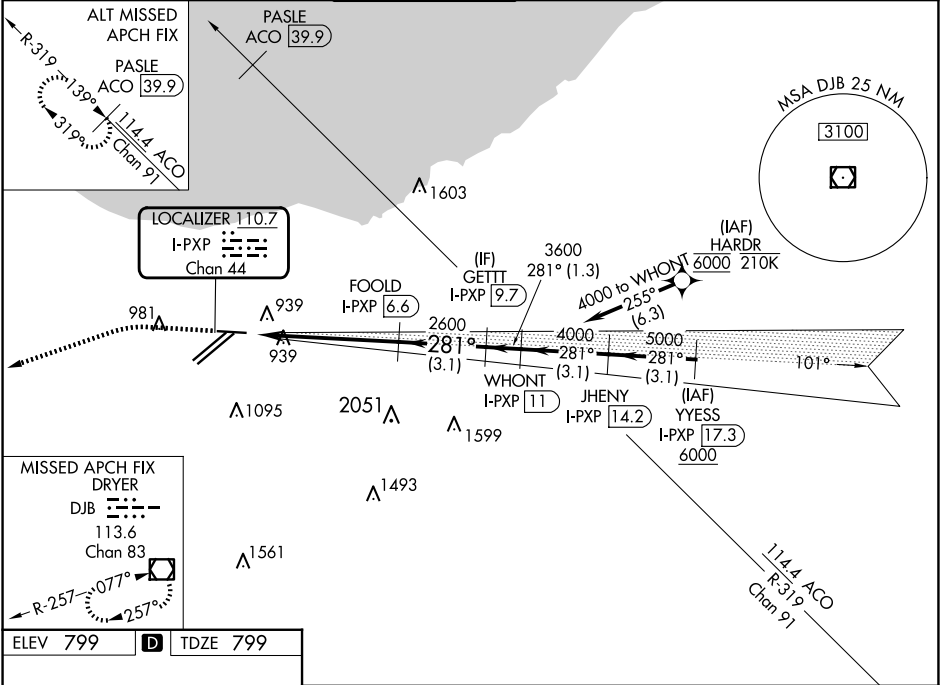


LOC/DME I-PXP 110.7 Chan 44	APP CRS 281°	Rwy Idg TDZE 799 Apt Elev 799	6018
---	------------------------	---	-------------

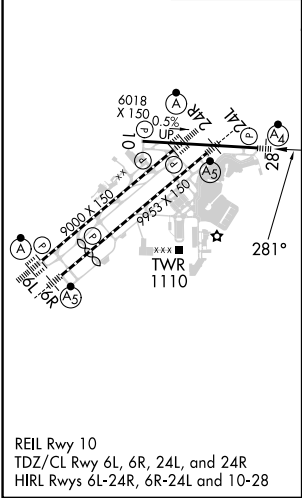
ILS or LOC RWY 28
CLEVELAND-HOPKINS INTL (CLE)

RNAV 1. From HARDR: RNAV 1-DME/DME/IRU or GPS required for procedure entry. Aircraft not DME/DME/IRU or GPS equipped - RADAR required for procedure entry. DME required.			MALSF 	MISSED APPROACH: Climb to 1400 then climbing left turn to 3000 direct DJB VOR/DME and hold.
Circling Rwy 10 NA at night. Inop table does not apply to S-ILS 28.				

D-ATIS ARR 127.85 DEP 132.375	CLEVELAND APP CON 126.55 346.325	CLEVELAND TOWER 124.5 273.45	GND CON 121.7 273.45	CLNC DEL 125.05 273.45	CPDLC
---	--	--	--------------------------------	----------------------------------	-------



ELEV 799	D	TDZE 799
-----------------	----------	-----------------



1400	3000	DJB
*LOC only.		

EC-2, 10 JUL 2025 to 07 AUG 2025

EC-2, 10 JUL 2025 to 07 AUG 2025