

LOC/DME I-HPI <u>109.9</u> Chan 36	APP CRS 238°	24L 9953 TDZE 786 Apt Elev 799	24R 9000 780 799
--	------------------------	--	--

ILS or LOC RWY 24L
CLEVELAND-HOPKINS INTL (CLE)

DME required. Aircraft not DME/DME/IRU or GPS equipped - RADAR required for procedure entry. RNAV 1. From LLROY and BUDRW: RNAV 1-DME/DME/IRU or GPS required for procedure entry.

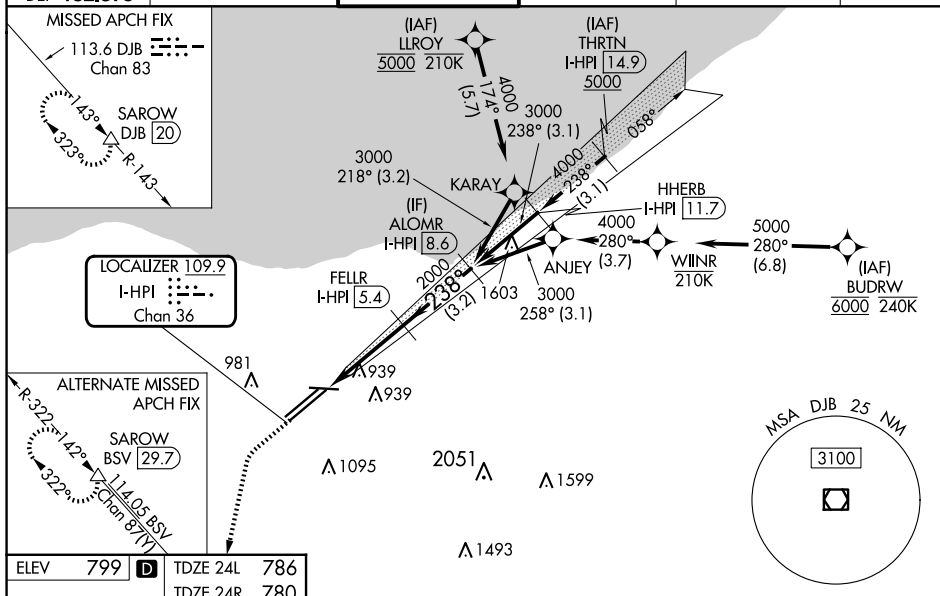
T Circling Rwy 10 NA at night. Simultaneous approach authorized. Simultaneous operations require use of vertical guidance; maintain last assigned altitude until established on glideslope. Inop table does not apply to Sidestep 24R. For inop ALS, increase S-LOC 24L Cats C/D visibility to 1 $\frac{3}{4}$ SM.

Rwy 24L
MALSR

Rwy 24R
ALSF-2

MISSED APPROACH:
Climb to 1300 then
climbing left turn to
3000 on heading 200°
and DJB VOR/DME
R-143 to SAROW/DJB
20 DME and hold.

D-ATIS	CLEVELAND APP CON	CLEVELAND TOWER	GND CON	CLNC DEL	CPDLC
ARR 127.85	126.55 346.325	124.5 273.45	121.7 273.45	125.05 273.45	
DEP 132.375					



ELEV	799	D	TDZE 24L	786
			TDZE 24R	780

