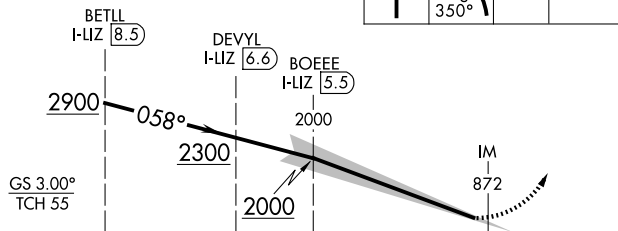


ILS RWY 6L (CAT II & III)
CLEVELAND-HOPKINS INTL (CLE)

MISSED APPROACH: Climb to 1800 then climbing left turn to 3000 on heading 350° and DJB VOR/DME R-054 to PASLE/DJB 20 DME and hold.

T Simultaneous approach authorized.
Simultaneous operations require use of vertical guidance;
maintain last assigned altitude until established on glideslope.

1800 ↑	3000 ↙ hdg 350°	DJB R-054	PASLE DJB 20
-----------	--------------------------	--------------	---



CATEGORY II & III ILS - SPECIAL AIRCREW
& AIRCRAFT CERTIFICATION REQUIRED

REIL Rwy 10
TDZ/CL Rwy 6L, 6R, 24L, and 24R
HIRL Rwy 6L-24R, 6R-24L and 10-28

EC-2, 10 JUL 2025 to 07 AUG 2025