

WAAS CH <b>86701</b> <b>W25A</b>	APP CRS <b>246°</b>	Rwy Ldg TDZE <b>478</b> Apt Elev <b>482</b>
--	------------------------	---

RNAV (GPS) RWY 25

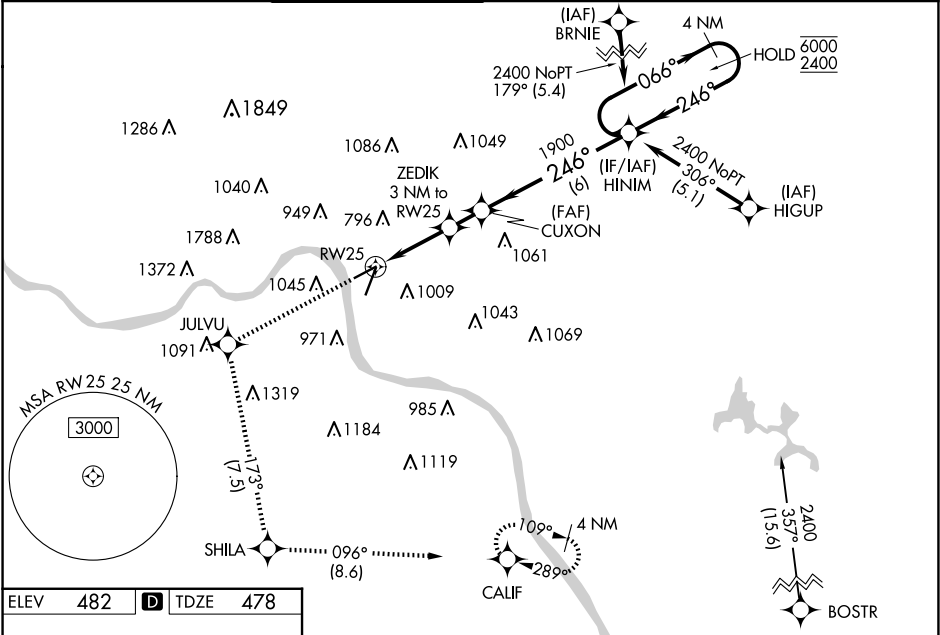
CINCINNATI MUNI/LUNKEN FLD (LUK)

RNP APCH - GPS.

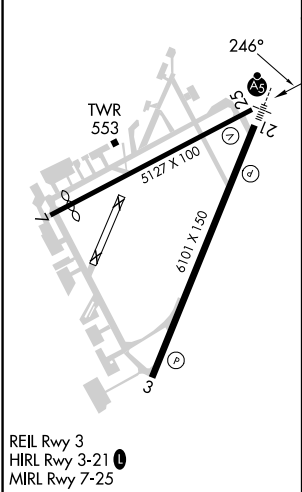
▼ Baro-VNAV and VDP NA when using CVG altimeter setting. Rwy 25 helicopter visibility reduction below  $\frac{3}{4}$  SM NA. For uncompensated Baro-VNAV systems, LNAV/VNAV NA below -15°C or above 54°C. When local altimeter setting not received, use CVG altimeter setting and increase LPV DA to 961 feet, all visibilities  $\frac{1}{8}$  SM; increase LNAV/VNAV DA to 1248 feet; increase all MDAs 100 feet, LNAV Cat B visibility  $\frac{1}{4}$  SM, and LNAV Cat C/D visibility  $\frac{1}{2}$  SM.

▲ MISSED APPROACH: Climb to 2500 direct JULVU and on track 173° to SHILA and on track 096° to CALIF and hold, continue climb-in-hold to 2600.

ATIS <b>123.6</b>	CINCINNATI APP CON <b>121.0 254.25</b>	LUNKEN TOWER ★ <b>118.7(CTAF) 0 257.8</b>	GND CON <b>121.9</b>	CLNC DEL <b>121.9</b>	CLNC DEL <b>124.9</b> (when twr closed)	UNICOM <b>122.95</b>
----------------------	---	--	-------------------------	--------------------------	---	-------------------------



ELEV <b>482</b>	<b>D</b>	TDZE <b>478</b>
-----------------	----------	-----------------



2500	JULVU	tr 173°	SHILA	tr 096°	CALIF	VGSI and RNAV glidepath not coincident (VGSI Angle 3.00/TCH 40).
4 NM Holding Pattern						
RW25						
ZEDIK 3 NM to RW25						
CUXON 1900						
HINIM						
066° → 6000						
← 246° 2400						
GP 3.00° TCH 55						
2.2 NM 0.8 NM 1.3 NM 6 NM						
CATEGORY	A		B		C	D
LPV DA	875-1¼		397 (400-1¼)			
LNAV/VNAV DA	1162-2½		684 (700-2½)			
LNAV MDA	1160-1 682 (700-1)		1160-2 682 (700-2)			