

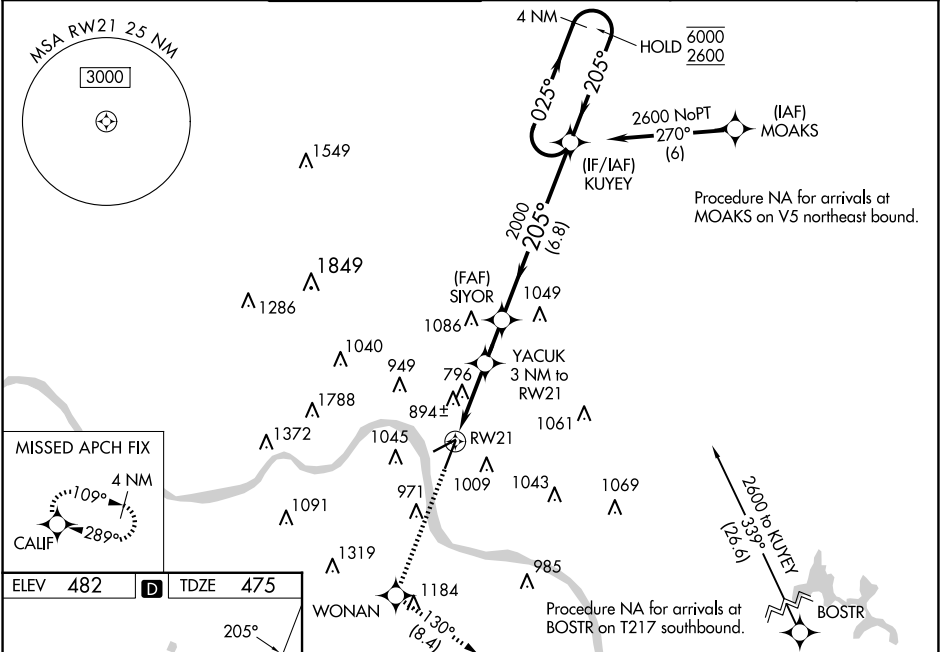


WAAS CH 90148 W21A	APP CRS 205°	Rwy Ldg TDZE 475 Apt Elev 482
--	------------------------	---

RNAV (GPS) RWY 21

CINCINNATI MUNI/LUNKEN FLD (LUK)

RNP APCH - GPS.					MALSR 	MISSED APPROACH: Climb to 2500 direct WONAN and on track 130° to CALIF and hold.
<div><div></div><div>Circling NA for Cat D north of Rwy 7-25. Circling Rwy 7 NA at night. For uncompensated Baro-VNAV systems, LNAV/VNAV NA below -15°C or above 54°C. Rwy 21 helicopter visibility reduction below RVR 4000 NA. Inop table does not apply to LPV all Cats and LNAV Cat A and B visibility. For inop ALS, increase LNAV/VNAV all Cats and LNAV Cat C and D visibility to 1½ SM.</div></div>						
ATIS 123.6	CINCINNATI APP CON 121.0 254.25	LUNKEN TOWER ★ 118.7 (CTAF) 0 257.8	GND CON 121.9	CLNC DEL 121.9	CLNC DEL 124.9 (When twr closed)	UNICOM 122.95



ELEV 482	D	TDZE 475
<div><div>TWR 553</div><div>5127' X 100</div><div>6101' X 150</div><div>3</div></div>		
<div><div>2500 WONAN</div><div>tr 130°</div><div>CALIF</div><div>YACUK 3 NM to RWY21</div><div>SIYOR</div><div>2000</div><div>2 NM to RWY21</div><div>RWY21</div><div>1460</div><div>2000</div><div>025°</div><div>6000</div><div>2600</div><div>GP 3.00°</div><div>TCH 39°</div></div>		
<div><div>2 NM</div><div>1 NM</div><div>1.7 NM</div><div>6.8 NM</div></div>		
CATEGORY	A	B C D
LPV DA		797/50 322 (400-1)
LNAV/VNAV DA		1160-1½ 685 (700-1½)
LNAV MDA	1160/50	685 (700-1) 1160-1½ 685 (700-1½)
CIRCLING	1260-1 778 (800-1)	1360-1¼ 878 (900-1¼) 1360-2½ 878 (900-2½) 1420-3 938 (1000-3)