

LOC/DME I-LUK <b>110.9</b> Chan <b>46</b>	APP CRS <b>205°</b>	Rwy Idg <b>6101</b> TDZE <b>475</b> Apt Elev <b>482</b>
---	------------------------	---

ILS or LOC RWY 21  
CINCINNATI MUNI/LUNKEN FLD (LUK)

DME required.

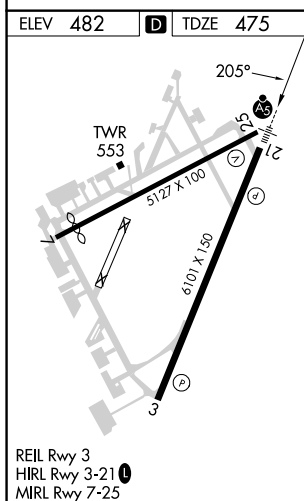
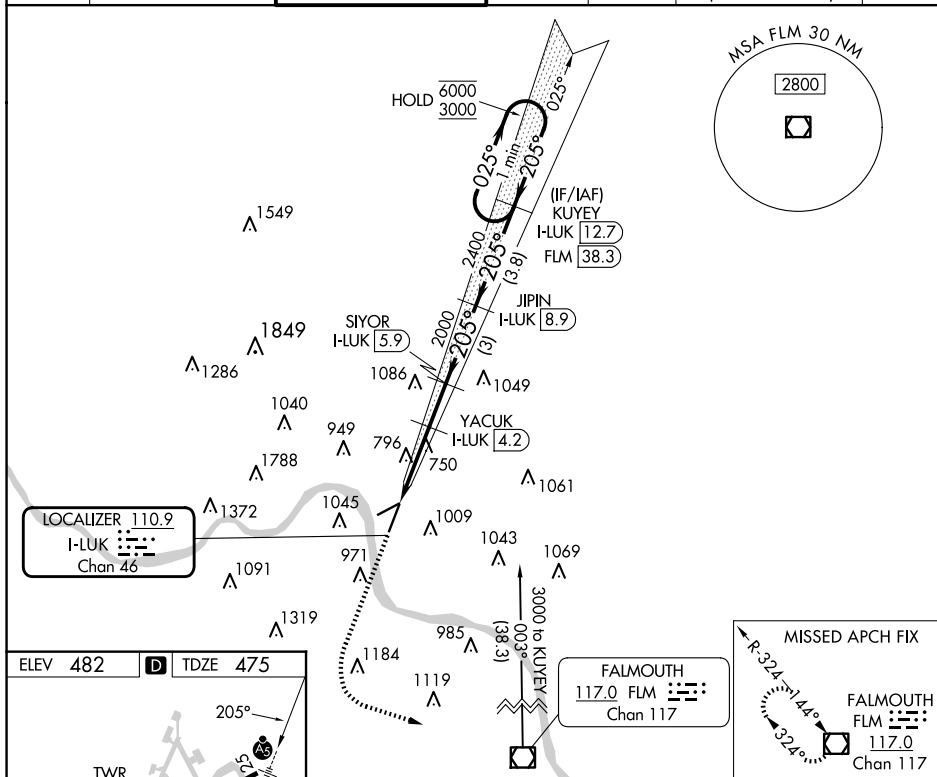
**T** Rwy 21 helicopter visibility reduction below RVR 4000 NA. Circling Rwy 7 NA  
**A** at night. Circling NA for Cat D north of Rwy 7-25. Inop table does not apply to  
S-ILS 21 all Cats and S-LOC 21 Cats A and B.


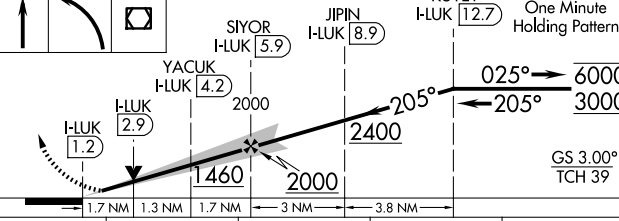
MALSR



**MISSED APPROACH:** Climb to 2000 then climbing left turn to 3000 direct FLM VOR/DME and hold.

ATIS <b>123.6</b>	CINCINNATI APP CON <b>121.0 254.25</b>	LUNKEN TOWER ★ <b>118.7 (CTAF) 0 257.8</b>	GND CON <b>121.9</b>	CLNC DEL <b>121.9</b>	CLNC DEL <b>124.9</b> (When twr closed)	UNICOM <b>122.95</b>
----------------------	---	---	-------------------------	--------------------------	---	-------------------------



2000 ↑	3000 ↘	FLM 						
CATEGORY	A		B		C		D	
S-ILS 21			797/50		322 (400-1)			
S-LOC 21	1060/50		585 (600-1)		1060-1¼		585 (600-1¼)	
CIRCLING	1260-1 778 (800-1)		1360-1¼ 878 (900-1¼)		1360-2½ 878 (900-2½)		1400-3 918 (1000-3)	