

LOC/DME	I-HKH	APP CRS	Rwy Ldg	5927
111.5		047°	TDZE	619
Chan 52			Apt Elev	620

ILS or LOC RWY 4R

CHICAGO MIDWAY INTL (MDW)

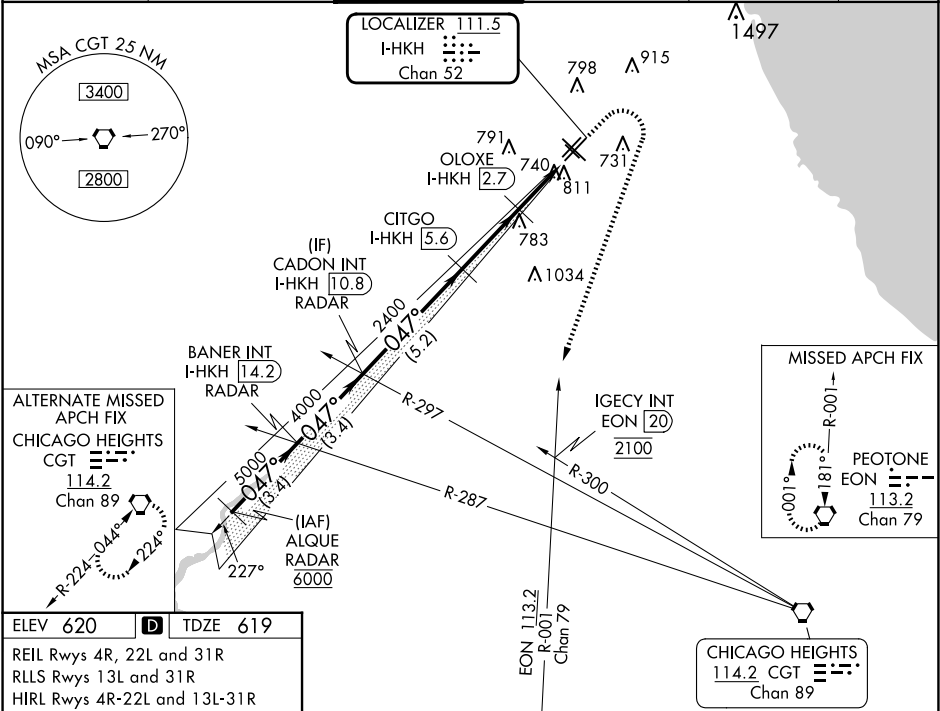
DME required for LOC only.
RNP APCH - GPS or RADAR required for procedure entry.

MISSED APPROACH: Climb to 1100 then climbing right turn to 2100 on heading 230° and on EON VORTAC R-001 until crossing IGENCY INT/EON 20 DME then climb to 2600 to EON VORTAC and hold.

▼

Rwy 4R helicopter visibility reduction below RVR 4000 NA.

D-ATIS	CHICAGO APP CON	MIDWAY TOWER	GND CON	CLNC DEL	CPDLC
132.75	128.2 353.875	135.2 269.125	118.075	124.625	



VGSI and ILS glidepath not coincident (VGSI Angle 3.00/TCH 66).				
ALQUE RADAR	BANER INT I-HKH 14.2 RADAR	CADON INT I-HKH 10.8 RADAR	CITGO I-HKH 5.6 OLOXE I-HKH 2.7 I-HKH 1.2 I-HKH 0.2	1100 2100 IGECY INT 2600 EON
6000	5000	4000	2400	1460
GS 3.00° TCH 50	3.4 NM	3.4 NM	5.2 NM	2.9 NM 1.5 NM 1 NM
CATEGORY	A	B	C	D
S-ILS 4R	869/40	250 (300-¾)	869/50	250 (300-1)
S-LOC 4R	1000/55	381 (400-1)	1000/60	381 (400-1¼)
CIRCLING	1120-1	500 (500-1)	1340-2 720 (800-2)	1340-2¼ 720 (800-2¼)