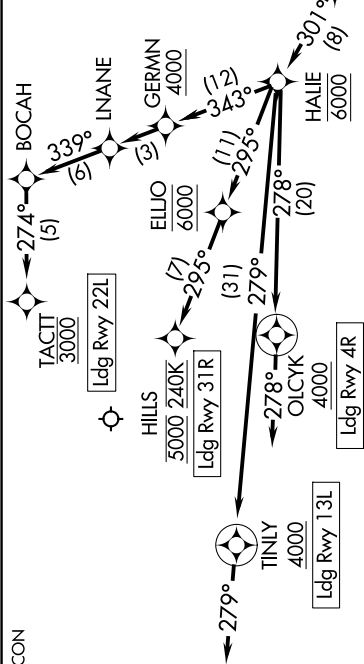


EC-3, 10 JUL 2025 to 07 AUG 2025

CHICAGO APP CON
128.2 353.875
D-ATIS
132.75



ARRIVAL ROUTE DESCRIPTION
DROSE TRANSITION (DROSE.FISSK7)

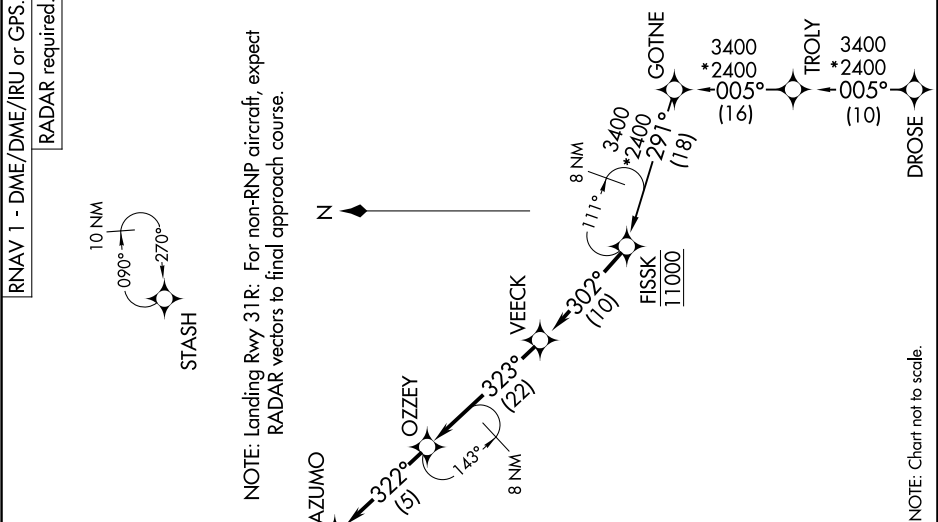
From FISSK on track 302° to VEECK, then on track 323° to OZZEY, then on track 322° to AZUMO, then on track 301° to cross HALIE at 6000. LANDING RUNWAY 4R: From HALIE on track 278° to cross OLCYK at or above 4000, then on track 278°. Expect RADAR vectors to final approach course. LANDING RUNWAY 13L: From HALIE on track 279° to cross TINLY at or above 4000, then on track 279°. Expect RADAR vectors to final approach course. LANDING RUNWAY 22L: From HALIE on track 343° to cross GERMN at or above 4000, then on track 343° to INANE, then on track 339° to BOCAH, then on track 274° to cross TACTT at 3000. Expect RNAV Rwy 22L approach or RADAR vectors to final approach course. LANDING RUNWAY 31R: From HALIE on track 295° to cross ELLJO at 6000, then on track 295° to cross HILLS at 5000 and at 240K. Expect ILS or RNAV Rwy 31R approach or RADAR vectors to final approach course.

LOST COMMUNICATIONS
RUNWAY 22L: If approach clearance not received by TACTT, proceed inbound on RNAV (GPS) or RNAV (RNP) Rwy 22L routing.

(FISSK.FISSK7) 25163
FISSK SEVEN ARRIVAL (RNAV)

AL-81 (FAA)

CHICAGO MIDWAY INTL (MDW)
CHICAGO, ILLINOIS



NOTE: Chart not to scale.

(FISSK.FISSK7) 12JUN25
FISSK SEVEN ARRIVAL (RNAV)

CHICAGO, ILLINOIS
CHICAGO MIDWAY INTL (MDW)

EC-3, 10 JUL 2025 to 07 AUG 2025