

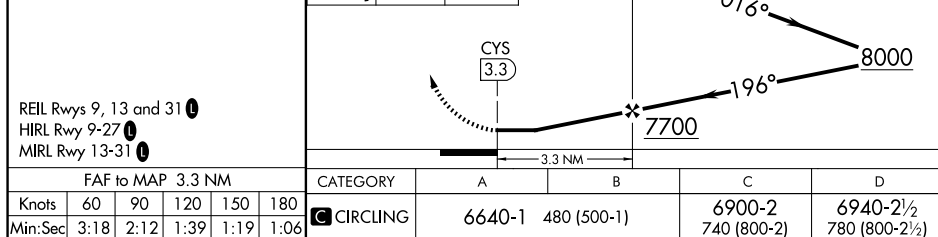
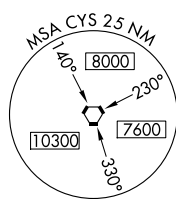
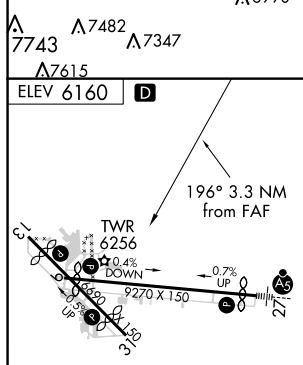
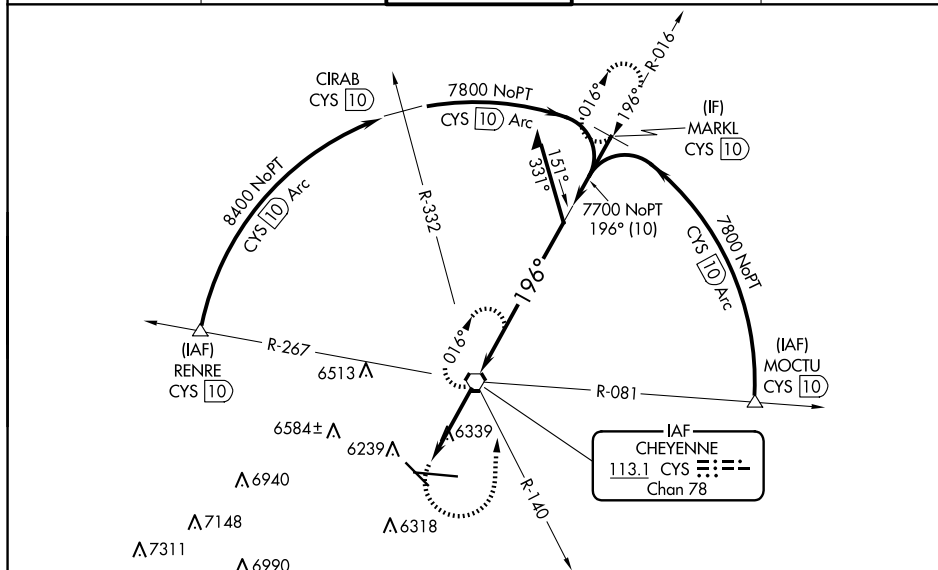
VORTAC CYS 113.1 Chan 78	APP CRS 196°	Rwy Idg TDZE Apt Elev	N/A N/A 6160
--	------------------------	-----------------------------	---

VOR or TACAN-A
CHEYENNE RGNL/JERRY OLSON FLD (CYS)

ASR/PAR

MISSED APPROACH: Climbing left turn to 8000 on heading 350° and on CYS VORTAC R-140 to CYS VORTAC and hold, continue climb-in-hold to 8000 (TACAN aircraft continue on CYS VORTAC R-016 to MARKL/10 DME and hold north, right turn, 196° inbound.)

ATIS	CHEYENNE APP CON★	CHEYENNE TOWER★	GND CON	UNICOM
134.425 278.3	124.55 263.075	118.7(CTAF) 0 257.8	121.9 254.275	122.95



CHEYENNE, WYOMING

Amdt 10B 29MAR18

CHEYENNE RGNL/JERRY OLSON FLD (CYS)

VOR or TACAN-A

41°09'N-104°49'W

NW-1, 10 JUL 2025 to 07 AUG 2025

NW-1, 10 JUL 2025 to 07 AUG 2025