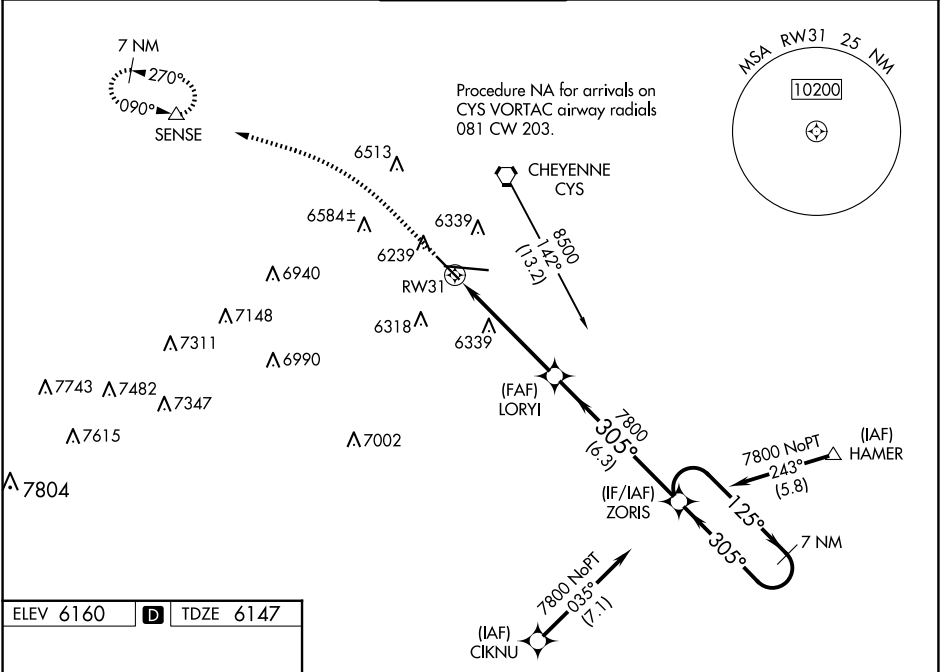


WAAS CH <b>99609</b> <b>W31A</b>	APP CRS <b>305°</b>	Rwy Idg TDZE <b>6147</b> Apt Elev <b>6160</b>
--	------------------------	---

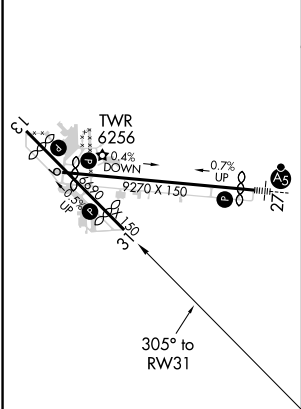
RNAV (GPS) RWY 31

CHEYENNE RGNL/JERRY OLSON FLD (C'Y.S)

RNP APCH. <div><div>T</div><div>A</div></div> <div>For uncompensated Baro-VNAV systems, LNAV/VNAV NA below -24°C or above 45°C.</div> ASR/PAR		MISSED APPROACH: Climb to 6600, then climbing left turn to 10400 direct SENSE and hold, continue climb-in-hold to 10400.		
ATIS <b>134.425 278.3</b>	CHEYENNE APP CON★ <b>124.55 263.075</b>	CHEYENNE TOWER★ <b>118.7(CTAF) 257.8</b>	GND CON <b>121.9 254.275</b>	UNICOM <b>122.95</b>



ELEV 6160	D	TDZE 6147
-----------	---	-----------



6600 10400 SENSE		LORYI 7800		ZORIS 7 NM Holding Pattern	
*LNAV only		*1.3 NM to RW31		GP 3.00° TCH 55	
RW31		1.3 3.8 NM 6.3 NM		7800 125° 305° 7800	
CATEGORY	A	B	C	D	
LPV DA	6397-¾		250 (300-¾)		
LNAV/VNAV DA	6458-⅞		311 (300-⅞)		
LNAV MDA	6600-1	453 (500-1)	6600-1⅓	453 (500-1⅓)	
CIRCLING	6640-1	480 (500-1)	6900-2 740 (800-2)	6920-2½ 760 (800-2½)	

NW-1, 10 JUL 2025 to 07 AUG 2025

NW-1, 10 JUL 2025 to 07 AUG 2025