

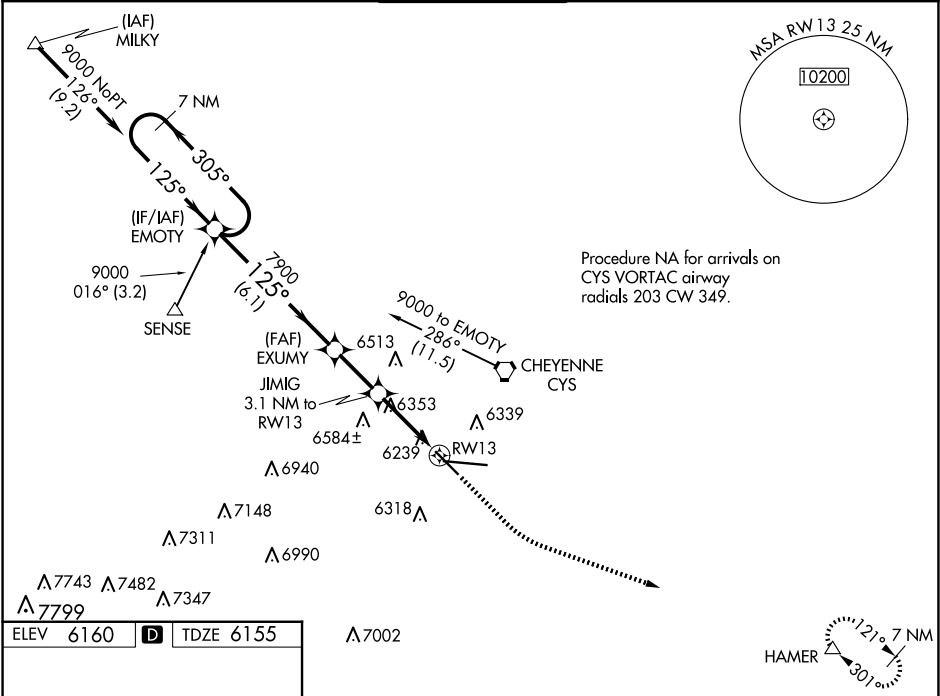
WAAS CH 56609 W13A	APP CRS 125°	Rwy Idg 4830 TDZE 6155 Apt Elev 6160
--	------------------------	---

RNAV (GPS) RWY 13

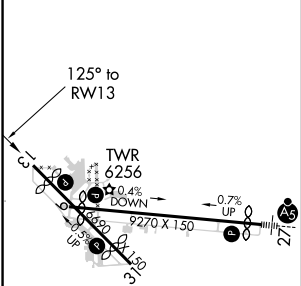
CHEYENNE RGNL/JERRY OLSON FLD (CYS)

RNP APCH.	For uncompensated Baro-VNAV systems, LNAV/VNAV NA below -24°C or above 45°C. Rwy 13 helicopter visibility reduction below ¾ SM NA.	MISSED APPROACH: Climb to 6600, then climbing left turn to 8500 direct HAMER and hold.
ASR/PAR		

ATIS 134.425 278.3	CHEYENNE APP CON★ 124.55 263.075	CHEYENNE TOWER★ 118.7 (CTAF) 0 257.8	GND CON 121.9 254.275	UNICOM 122.95
------------------------------	--	--	---------------------------------	-------------------------



ELEV 6160	D	TDZE 6155
-----------	---	-----------



7 NM Holding Pattern		EMOTY	EXUMY	JIMIG	GP 3.00° TCH 55	6600	8500	HAMER
9000		305°	125°	7900	*7180	3.1 NM to RWY 13	*1.3 NM to RWY 13	*LNAV only
6.1 NM		2.2 NM	1.8	1.3				
CATEGORY	A	B	C	D				
LPV DA	6405-¾		250 (300-¾)					
LNAV/VNAV DA	6419-⅞		264 (300-⅞)					
LNAV MDA	6620-1		465 (500-1)	6620-1⅓	465 (500-1⅓)			
CIRCLING	6640-1		480 (500-1)	6900-2	740 (800-2)	6920-2½	760 (800-2½)	

REIL Rwy 9, 13 and 31
HIRL Rwy 9-27
MIRL Rwy 13-31

NW-1, 10 JUL 2025 to 07 AUG 2025

NW-1, 10 JUL 2025 to 07 AUG 2025