

CHATTANOOGA, TENNESSEE

AL-79 (FAA)

23278

APP CRS	Rwy Idg	5000
<b>331°</b>	TDZE	672
	Apt Elev	683

RNAV (GPS) RWY 33  
LOVELL FLD (CHA)

RNP APCH - GPS.

**T** Straight-In Rwy 33 NA at night, Circling Rwy 15, 33 NA at night.  
**A** Rwy 33 helicopter visibility reduction below 1 SM NA.

**MISSED APPROACH:** Climb to 4100 direct  
HEXEX and hold.

\* Missed approach requires minimum climb of 235 feet per NM to 3000.

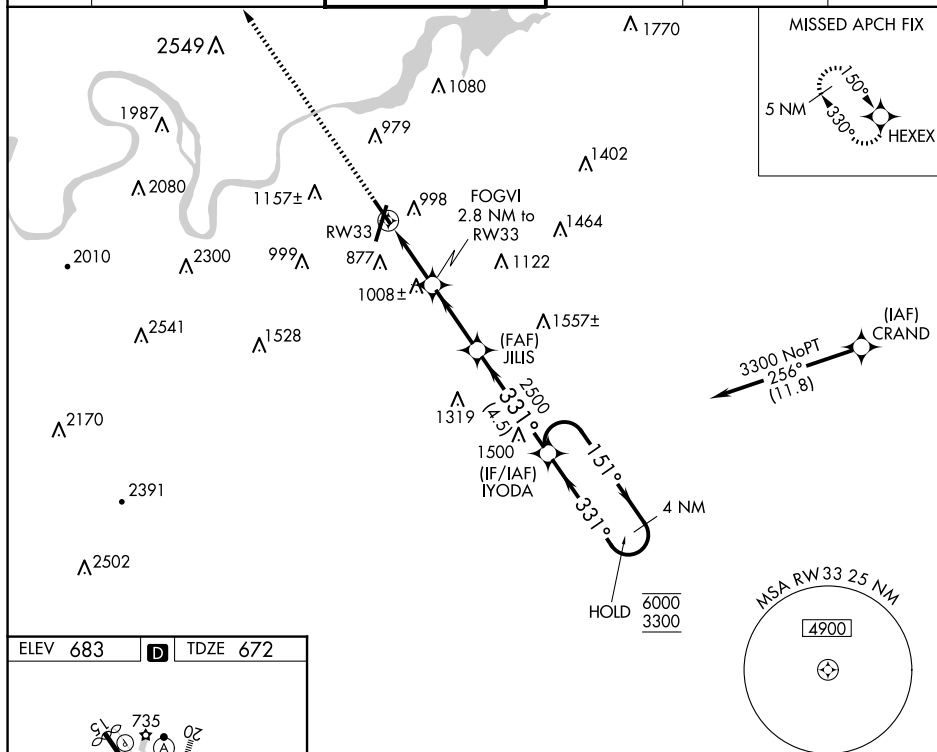
ATIS  
**119.85**

CHATTANOOGA APP CON ★  
125.1 379.1

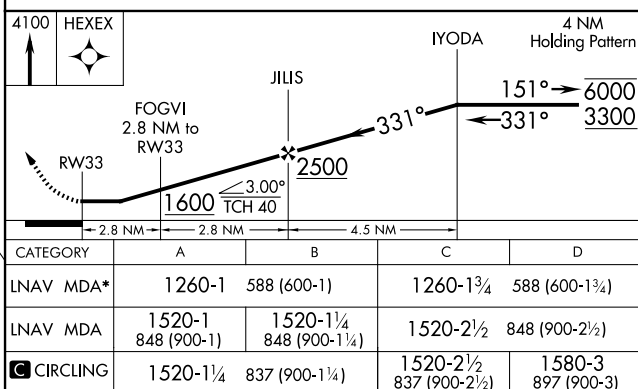
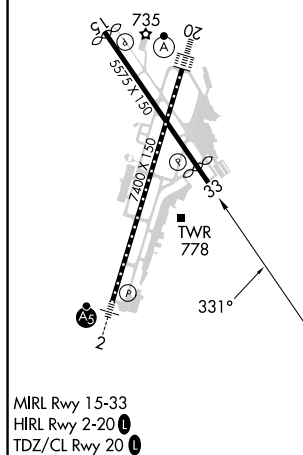
CHATTANOOGA TOWER ★  
118.3 (CTAF) **L** 257.8

GND CON  
121.7 348.6

CLNC DEL  
**120.95 348.6**

UNICOM  
122.95

ELEV 683		TDZE 672
----------	---	----------

CHATTANOOGA, TENNESSEE  
Amdt 2 15JUN23

35°02'N-85°12'W

LOVELL FLD (CHA)

RNAV (GPS) RWY 33

SE-1, 10 JUL 2025 to 07 AUG 2025