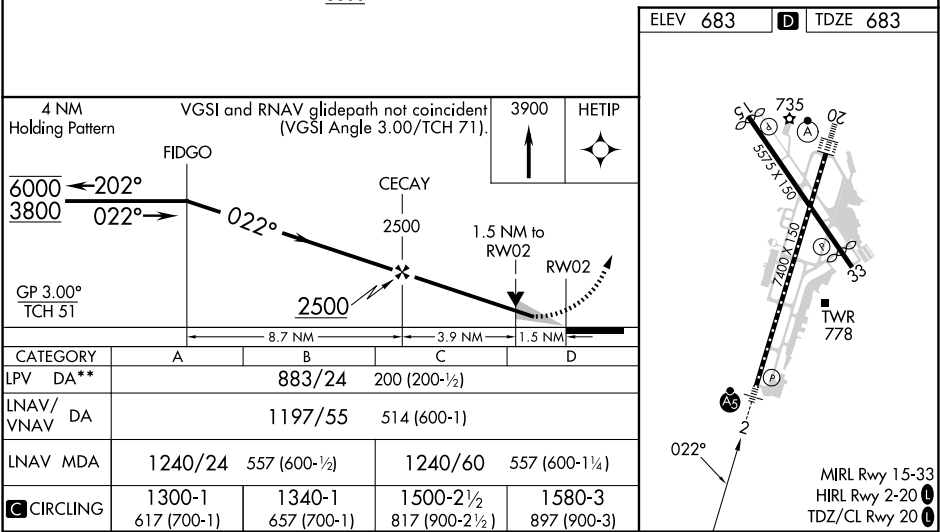
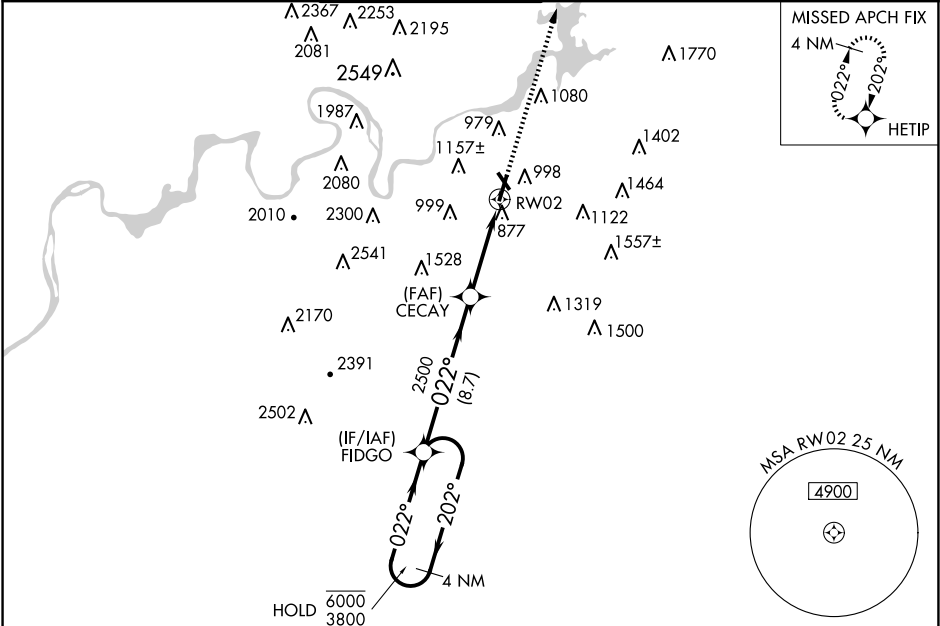


WAAS CH <b>65605</b> <b>W02A</b>	APP CRS <b>022°</b>	Rwy Idg TDZE <b>683</b> Apt Elev <b>683</b>
--	------------------------	---

RNAV (GPS) RWY 2

LOVELL FLD (CHA)

RNP APCH - GPS.			MALS	MISSED APPROACH: Climb to 3900 direct HETIP and hold, continue climb-in-hold to 3900.	
⚠ Circling Rwy 15, 33 NA at night. For uncompensated Baro-VNAV systems, LNAV/VNAV NA below -16°C or above 54°C. For inop ALS, increase LNAV/VNAV all Cats visibility to 1½ SM. **RVR 1800 authorized with use of FD or AP or HUD to DA.			⚠		
ATIS <b>119.85</b>	CHATTANOOGA APP CON ★ <b>125.1 379.1</b>	CHATTANOOGA TOWER ★ <b>118.3 (CTAF) 0 257.8</b>	GND CON <b>121.7 348.6</b>	CLNC DEL <b>120.95 348.6</b>	UNICOM <b>122.95</b>



SE-1, 10 JUL 2025 to 07 AUG 2025

SE-1, 10 JUL 2025 to 07 AUG 2025