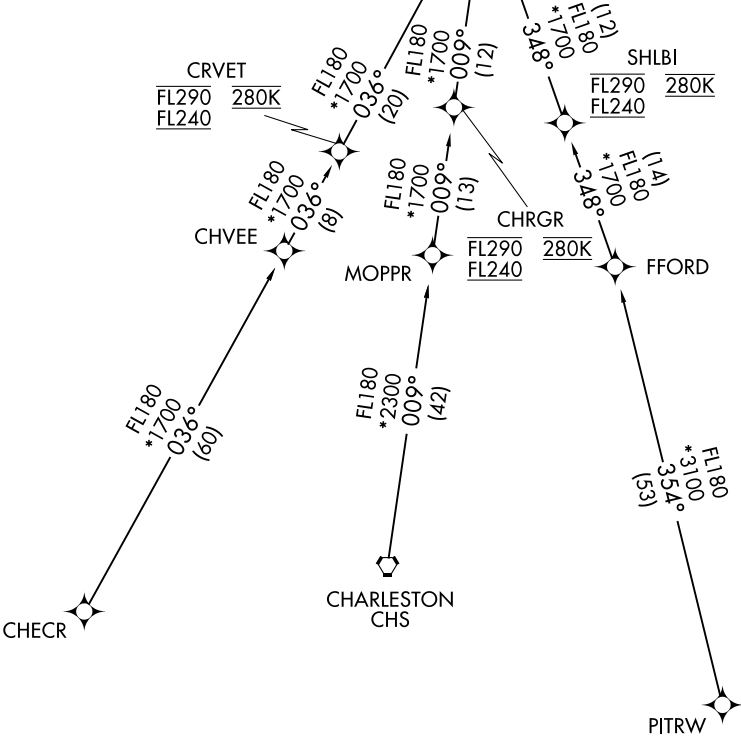
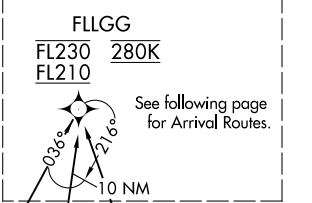


CHARLOTTE APP CON
126.15 282.325
D-ATIS ARR
121.15

RNAV 1 - DME/DME/IRU OR GPS.
RADAR required.



NOTE: Jet aircraft only.
NOTE: Landing south use Rwy 18L transition,
landing north use Rwy 36R transition.
Expect runway assignment from CLT approach.
NOTE: Jet aircraft descend via Mach number until 280K,
if unable, advise ATC.

NOTE: Chart not to scale.

CHARLESTON TRANSITION (CHS.STOCR4)
CHECR TRANSITION (CHECR.STOCR4)
PITRW TRANSITION (PITRW.STOCR4)

(CONTINUED ON FOLLOWING PAGE)