

RNAV (GPS) Y RWY 36L
CHARLOTTE/DOUGLAS INTL (CLT)

ALSF-2

MISSED APPROACH: Climb to 1200 then climbing left turn to 4000 direct BUDKE and hold.

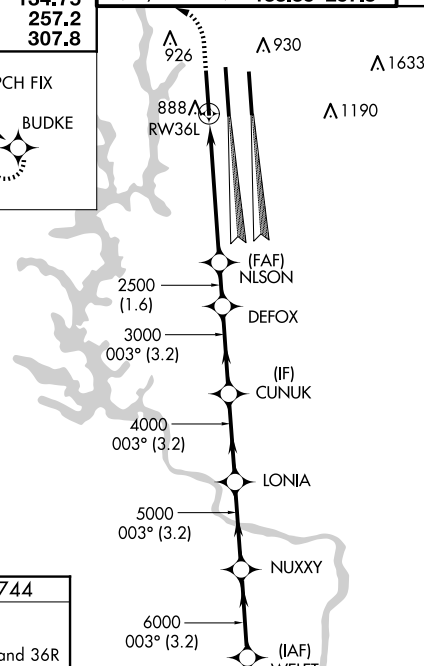
MISSED APCH FIX

132°

BUDKE

312°

4 NM



<div><div>1200</div><div>4000</div><div>BUDKE</div></div> <div><div>VGSI and RNAV glidepath not coincident (VGSI Angle 3.00°/TCH 70).</div><div>WELET</div></div>				
<div><div>*RNAV only.</div><div>*1.1 NM to RW36L</div><div>NLSON 2500</div><div>DEFOX</div><div>CUNUK</div><div>LONIA</div><div>NUXXY</div><div>003°</div><div>7000</div><div>GP 3.00°</div><div>TCH 55</div></div>				
<div><div>RW36L</div><div>1.1</div><div>4.2 NM</div><div>1.6 NM</div><div>3.2 NM</div><div>3.2 NM</div><div>3.2 NM</div><div>3.2 NM</div></div>				
CATEGORY	A	B	C	D
LPV DA	944/18 200 (200-½)			
RNAV/NAV DA	1049/24 305 (400-½)			
RNAV MDA	1140/24 396 (400-½)	1140/35 396 (400-¾)		
C CIRCLING	1380-1 632 (700-1)	1500-2¼ 752 (800-2¼)		1500-2½ 752 (800-2½)

SE-2. 10 JUL 2025 to 07 AUG 2025