

APP CRS 003°	Rwy Idg 10000 TDZE 707 Apt Elev 748
------------------------	--

RNAV (RNP) Z RWY 36C

CHARLOTTE/DOUGLAS INTL (CLT)

RNP AR APCH - GPS.

T Simultaneous approach authorized. Use of FD or AP required during simultaneous operations. For uncompensated Baro-VNAV systems, procedure NA below -8°C or above 54°C. For inop ALS, increase RNP 0.30 visibility all Cats to 1% SM.

ALSF-2



MISSED APPROACH: Climb to 3000 on track 003° to TOMME and hold.

D-ATIS
ARR **121.15**
DEP **132.1**

CHARLOTTE APP CON	
01°-119°)	128.32
20°-295°)	120.05
96°-360°)	134.75
80°-359°)	257.2
60°-179°)	307.8

CHARLOTTE TOWER		
(Rwys 18L-36R)	118.1	257.8
(Rwy 18C-36C)	126.4	257.8
(Rwy 18R-36L)	133.35	257.8

GND CON
121.8 348.6 (WEST)
121.9 348.6 (EAST)

CLNC DEL	127.15	348.6
----------	--------	-------

1847

Λ 926 ▲ Λ 930

18 (14.0) →

4.9)

(FAF)
GLAS

NIVSE

(IF)
MARJO

DENNE

HUNEX

KPIS

SOLMN
(RNP 0.50)

SI and

MISSED APCH FIX

11

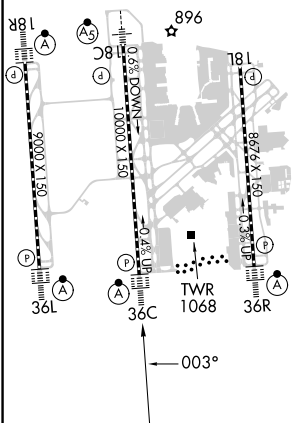
.....

1

TOMME

ELEV 748	D	TDZE 707
----------	----------	----------

HIRL all Rwy's
REIL Rwy's 18L and 23
TDZ/CI Rwy's 18R, 36L, 36C and 36R



3000 ↑ tr 003°	TOMME ✦	VGSI and RNAV glidepath not coincident (VGSI Angle 3.00/TCH 72).					SOLMN
RW36C		GLASI 2500	NIVSE 3000	MARJO 4000	DENNE 5000	HUNEX 6000	KRISL 7000
5.4 NM		1.6 NM	3.2 NM	3.2 NM	3.2 NM	3.2 NM	3.2 NM
CATEGORY	A	B	C	D			
RNP 0.11 DA	1134/40		427 (400-¾)				
RNP 0.30 DA	1180/50		473 (500-1)				