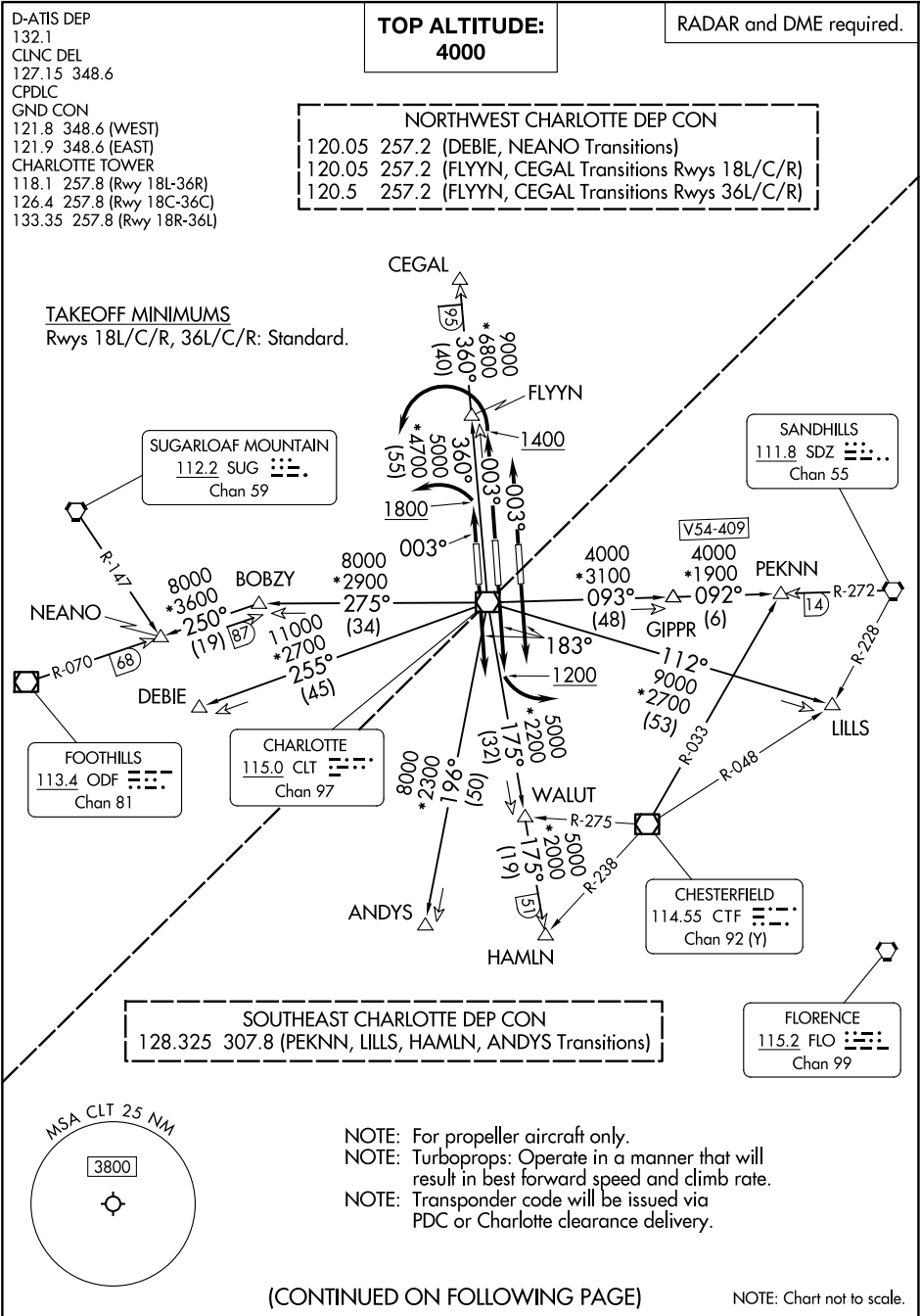


KNIGHTS THREE DEPARTURE



MSA CLT 25 NM
3800

NOTE: For propeller aircraft only.
NOTE: Turboprops: Operate in a manner that will result in best forward speed and climb rate.
NOTE: Transponder code will be issued via PDC or Charlotte clearance delivery.

(CONTINUED ON FOLLOWING PAGE)

NOTE: Chart not to scale.