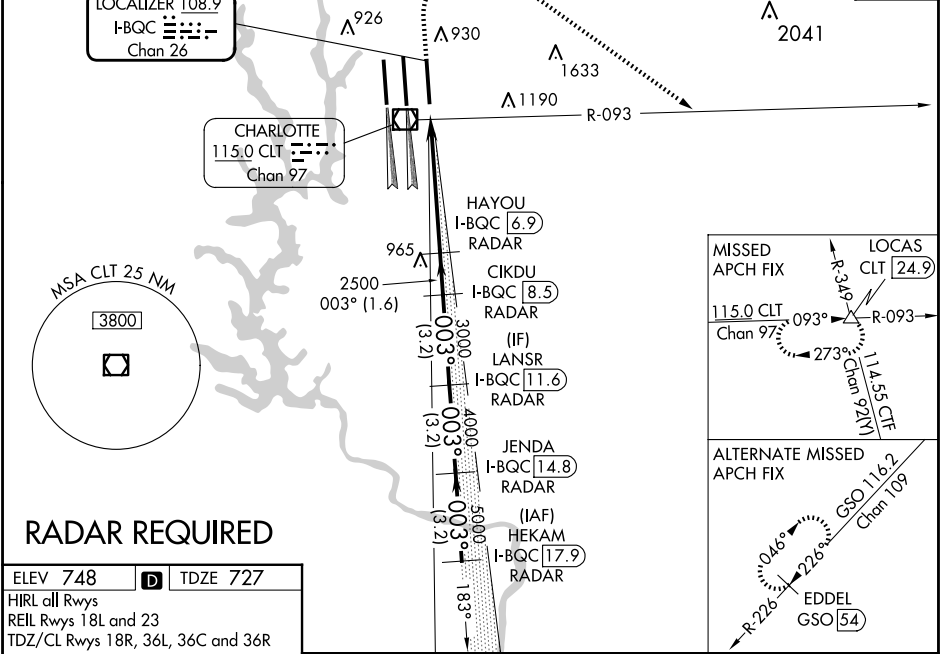


LOC/DME I-BQC	APP CRS	Rwy Idg	8390
108.9	003°	TDZE	727
Chan 26		Apt Elev	748

ILS or LOC RWY 36R

CHARLOTTE/DOUGLAS INTL (CLT)

⚠ Circling NA at night. Simultaneous approach authorized. DME or RADAR required.		ALS-F-2	MISSED APPROACH: Climb to 1320 then climbing right turn to 4000 on CLT VOR/DME R-093 to LOCAS INT/24.9 DME and hold.	
D-ATIS	CHARLOTTE APP CON	CHARLOTTE TOWER	GND CON	CLNC DEL
ARR 121.15	(001°-119°) 128.32	(Rwys 18L-36R) 118.1 257.8	121.8 348.6 (WEST)	127.15
DEP 132.1	(120°-295°) 120.05	(Rwy 18C-36C) 126.4 257.8	121.9 348.6 (EAST)	348.6
	(296°-360°) 134.75	(Rwy 18R-36L) 133.35 257.8		
	(180°-359°) 257.2			
	(360°-179°) 307.8			



1320 4000		CLT R-093	LOCAS CLT 24.9	VGSI and ILS glidepath not coincident (VGSI Angle 3.00/TCH 74).	
* LOC only.		JENDA I-BQC 14.8 RADAR		HEKAM I-BQC 17.9 RADAR	
1 NM		4.4 NM	1.6 NM	3.2 NM	3.2 NM
CATEGORY		A	B	C	D
S-ILS 36R		927/18 200 (200-½)			
S-LOC 36R		1120/24 393 (400-½)	1120/35 393 (400-½)		
CIRCLING		1380-1 632 (700-1)	1500-2¼ 752 (800-2¼)		1500-2½ 752 (800-2½)

SE-2, 10 JUL 2025 to 07 AUG 2025

SE-2, 10 JUL 2025 to 07 AUG 2025