
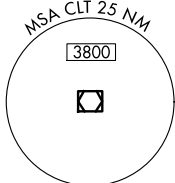
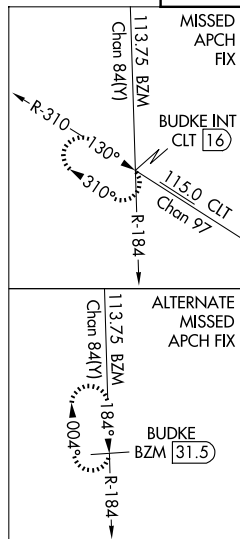
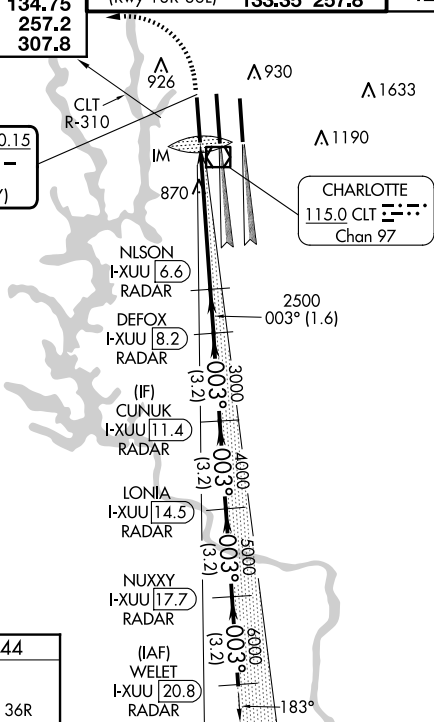


ILS or LOC RWY 36L  
CHARLOTTE/DOUGLAS INTL (CLT)

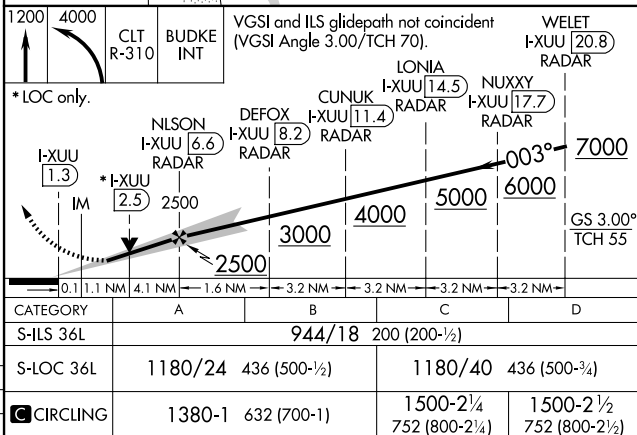
ALSF-2

**MISSED APPROACH:** Climb to 1200 then climbing left turn to 4000 on CLT VOR/DME R-310 to BUDKE/CLT 16 DME and hold.

LOCALIZER 110.15  
I-XUU   
Chan 38(Y)



## RADAR REQUIRED



SE-2, 10 JUL 2025 to 07 AUG 2025