

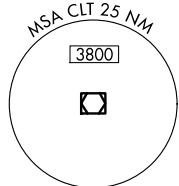
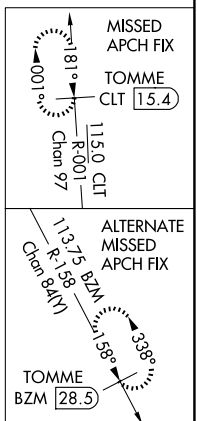
**ILS RWY 36C (CAT II & III)**  
CHARLOTTE/DOUGLAS INTL (CLT)

**MISSED APPROACH:** Climb to 3000 on CLT  
VOR/DME R-001 to TOMME/CLT 15.4 DME  
and hold.



(270°-360°)	347.5		CPDLC
(180°-359°)	257.2		
(360°-179°)	307.8		

LOCALIZER 111.7  
I-DQG  $\begin{array}{c} \cdot\cdot \\ \equiv \\ \cdot\cdot \\ \equiv \\ \cdot\cdot \\ \equiv \end{array} \cdot\cdot\cdot -$



VGSI and ILS glidepath not coincident  
[VGSI Angle 3.00/TCH 72].

CATEGORY	A	B	C	D
S-ILS 36C		CAT II RA 126/12	100 DA 807	
S-ILS 36C		CAT III <sub>a</sub>	RVR 07	
S-ILS 36C		CAT III <sub>b</sub>	RVR 07	
S-ILS 36C		CAT III <sub>c</sub>	NA	

CATEGORY II & III ILS - SPECIAL AIRCREW  
& AIRCRAFT CERTIFICATION REQUIRED

HIRL all Rwy's  
REIL Rwy's 18L and 23  
TDZ/CL Rwy's 18R, 36L, 36C and 36R

CHARLOTTE/DOUGLAS INTL (CLT)

35°13'N-80°57'W

**IIS RWY 36C (CAT II & III)**