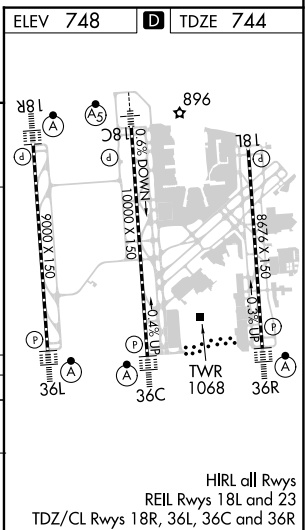
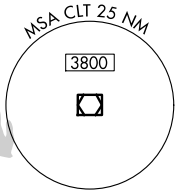


ILS RWY 18R (SA CAT I)
CHARLOTTE/DOUGLAS INTL (CLT)

ALSF-2

MISSED APPROACH: Climb to 1200 then climbing right turn to 4000 on CLT VOR/DME R-250 to STULL INT/CLT 13 DME and hold, continue climb-in-hold to 4000.

CPDLC

SA CATEGORY I ILS SPECIAL AIRCREW
& AIRCRAFT CERTIFICATION REQUIRED

SE-2, 10 JUL 2025 to 07 AUG 2025