

CHSLY SIX ARRIVAL (RNAV)

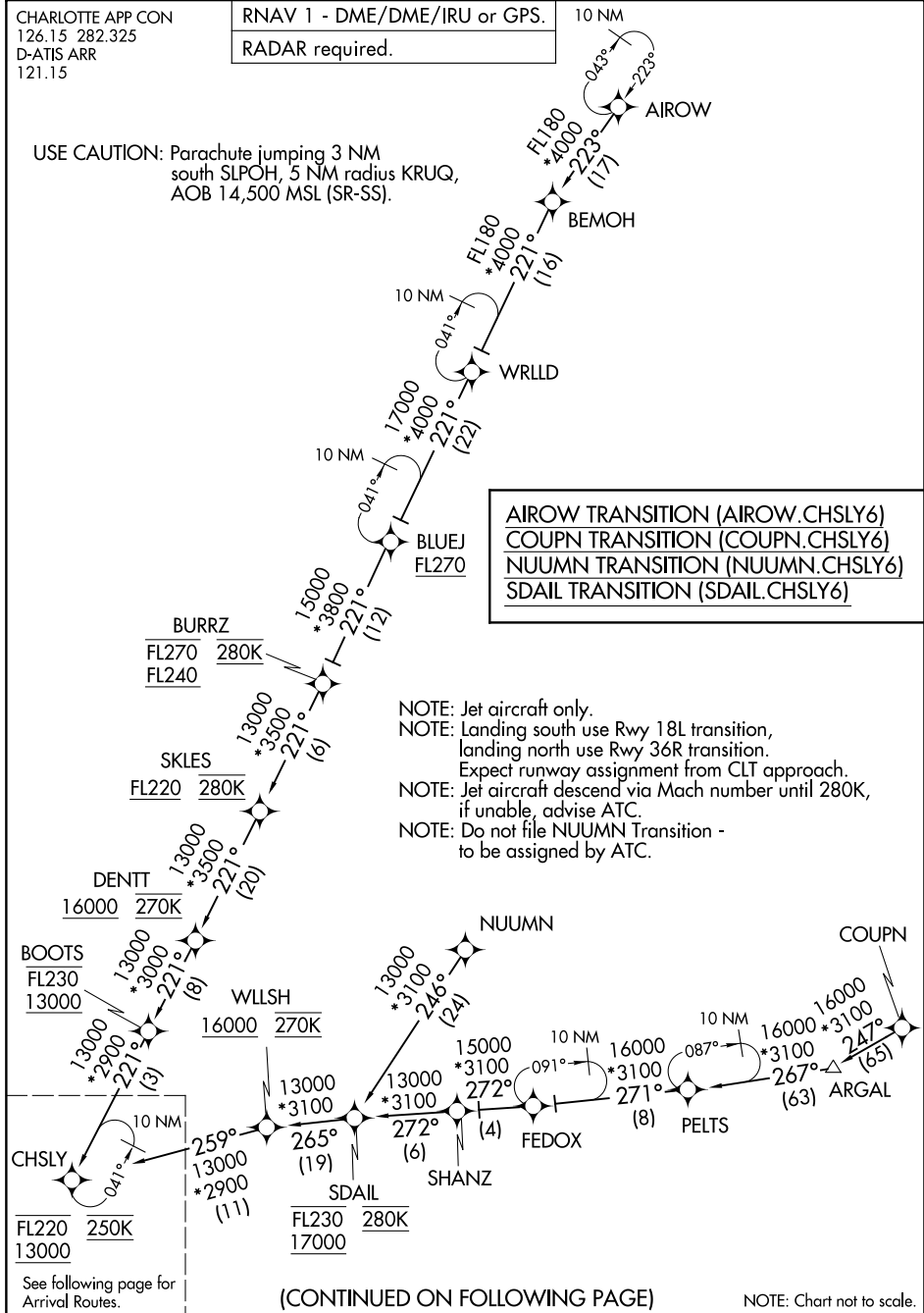
Transition Routes

CHARLOTTE/DOUGLAS INTL (CLT)
CHARLOTTE, NORTH CAROLINA

RADAR required.

10 NM

USE CAUTION: Parachute jumping 3 NM south SLPOH, 5 NM radius KRJQ, AOB 14,500 MSL (SR-SS).



CHSLY SIX ARRIVAL (RNAV)

Transition Routes

CHARLOTTE, NORTH CAROLINA
CHARLOTTE/DOUGLAS INTL (CLT)

(CHSLY.CHSLY6) 16MAY24

SE-2, 10 JUL 2025 to 07 AUG 2025