

BOBZY FIVE DEPARTURE (RNAV)

AL-78 (FAA)

CHARLOTTE/DOUGLAS INTL (CLT)
CHARLOTTE, NORTH CAROLINA

SE-2, 10 JUL 2025 to 07 AUG 2025

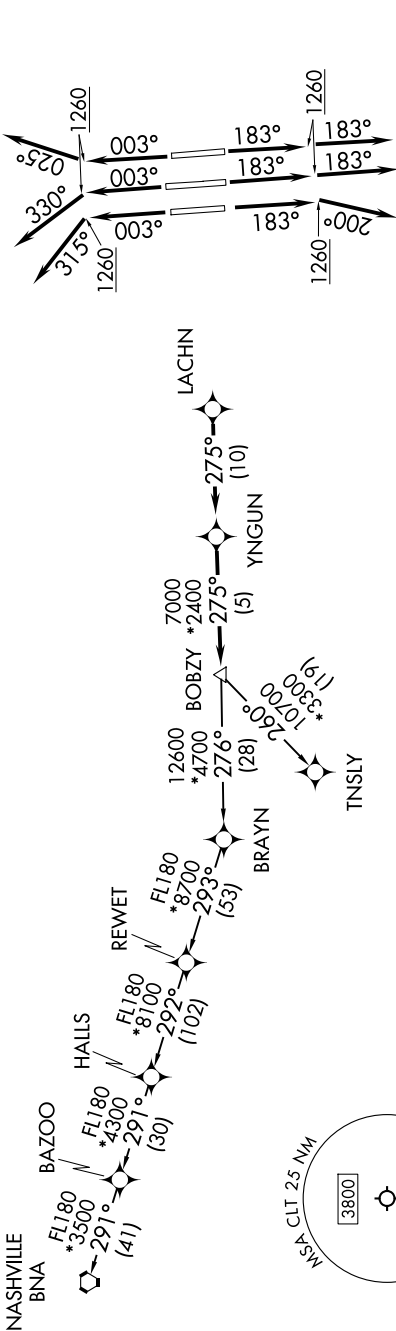
TOP ALTITUDE:
8000

RNAV 1-DME/DME/IRU or GPS.
RADAR required.

NOTE: For turbo jets only.
NOTE: If unable to accept climb rates, advise ATC on initial contact.
NOTE: Transponder code will be issued via PDC or Charlotte CLNC DEL.
NOTE: Accelerate to 250K, if unable advise ATC. Upon reaching 10000 MSL, accelerate to and maintain 280K, if unable advise ATC.

CHARLOTTE DEP CON
120.5 257.2
D-ATIS DEP 132.1
CLNC DEL
127.15 348.6
CPDIC
GND CON
121.8 348.6 (WEST)
121.9 348.6 (EAST)
CHARLOTTE TOWER
118.1 257.8 (Rwys 18L-36R)
126.4 257.8 (Rwy 18C-36C)
133.35 257.8 (Rwy 18R-36L)

TAKEOFF MINIMUMS
Rwys 18L/C/R, 36C/R: Standard with minimum climb of 500' per NM to 1260.
Rwy 36L: Standard with minimum climb of 500' per NM to 1400.



(CONTINUED ON FOLLOWING PAGE)

SE-2, 10 JUL 2025 to 07 AUG 2025

BOBZY FIVE DEPARTURE (RNAV)

CHARLOTTE, NORTH CAROLINA
CHARLOTTE/DOUGLAS INTL (CLT)