

BEAVY SIX DEPARTURE (RNAV)

CHARLOTTE/DOUGLAS INTL (CLT)
CHARLOTTE, NORTH CAROLINA

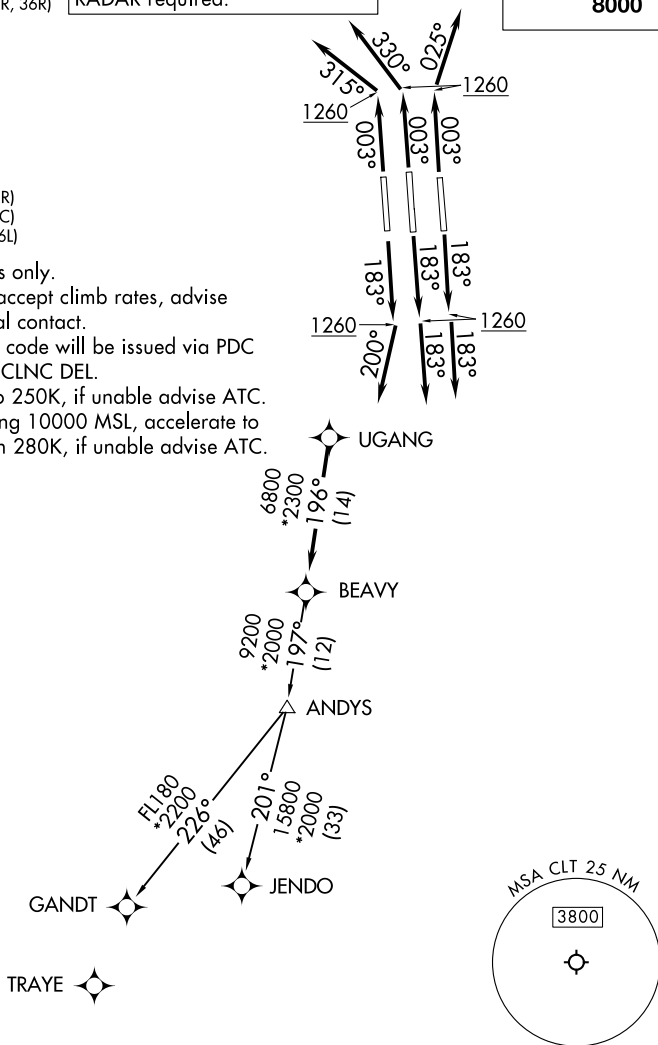
CHARLOTTE DEP CON
120.5 257.2 (Rwys 36L/C)
124.0 307.8 (Rwys 18L/C/R. 36R)

RNAV 1-DME/DME/IRU or GPS.
RADAR required.

TOP ALTITUDE:
8000

133.35 257.8 (R_{wv} 18R-361)

NOTE: Accelerate to 250K, if unable advise ATC.
Upon reaching 10000 MSL, accelerate to
and maintain 280K, if unable advise ATC.



Rwy 36L: Standard with minimum climb of 500' per NM to 1400.

(CONTINUED ON FOLLOWING PAGE)

BEAVY SIX DEPARTURE (RNAV)

(BEAVY6.BEAVY) 21MAR24

CHARLOTTE, NORTH CAROLINA
CHARLOTTE/DOUGLAS INTL (CLT)

SE-2, 10 JUL 2025 to 07 AUG 2025