

CHARLESTON, SOUTH CAROLINA

NOTE: Chart not to scale.

DEPARTURE ROUTE DESCRIPTION

TAKEOFF RUNWAY 3: Climb on heading 031° to 560, then right turn direct LORN, then on depicted route to PLUMTO, thence. . . .

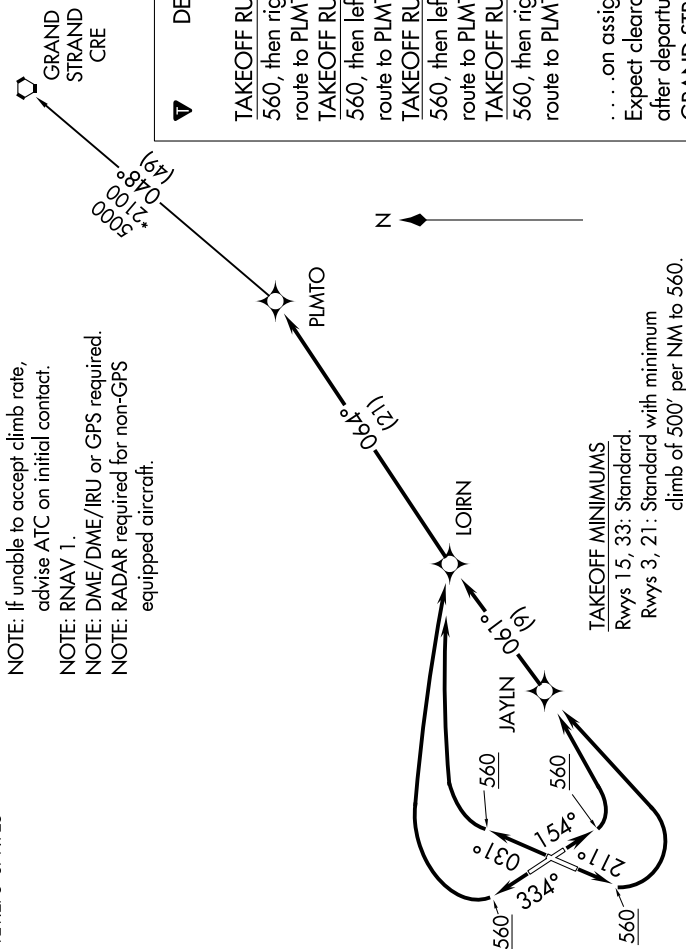
TAKEOFF RUNWAY 15: Climb on heading 154° to 560, then left turn direct JAYLIN, then on depicted route to PLUMTO, thence. . . .

TAKEOFF RUNWAY 21: Climb on heading 211° to 560, then left turn direct JAYLIN, then on depicted route to PLUMTO, thence. . . .

TAKEOFF RUNWAY 33: Climb on heading 334° to 560, then right turn direct LORN, then on depicted route to PLUMTO, thence. . . .

... on assigned transition/route. Maintain 4000. Expect clearance to filed altitude within ten minutes after departure.

GRAND STRAND TRANSITION (PLMTO3.CRE):



D-ATIS
124.75
CLINC DEL
127.325 291.65
CPDIC
GND CON
121.9 348.6
CHARLESTON TOWER
126.0 239.0
CHARLESTON DEP CON
121.275 379.925

TAKEOFF MINIMUMS
Rwys 15, 33: Standard
Rwys 3, 21: Standard
climb of 2

PLMTO THREE DEPARTURE (RNAV)

CHARLESTON, SOUTH CAROLINA
CHARLESTON AFB/INTL (CHS)

(PLMTO3.PLMTO) 05NOV20