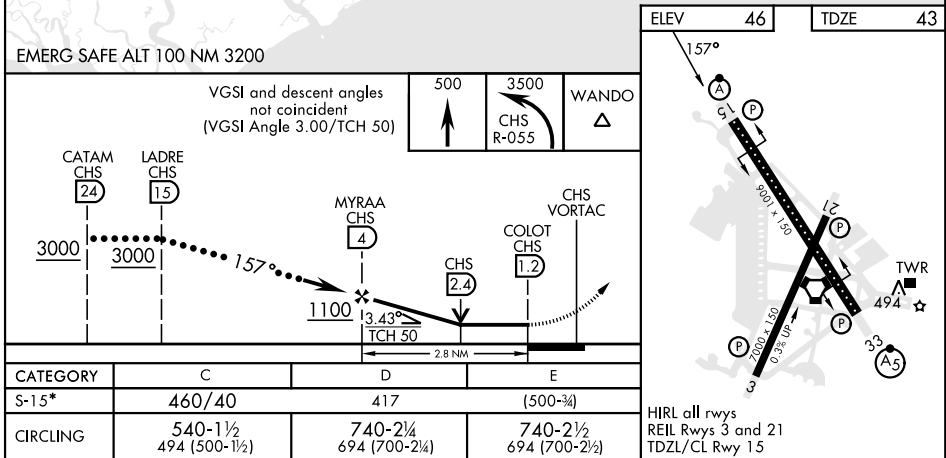
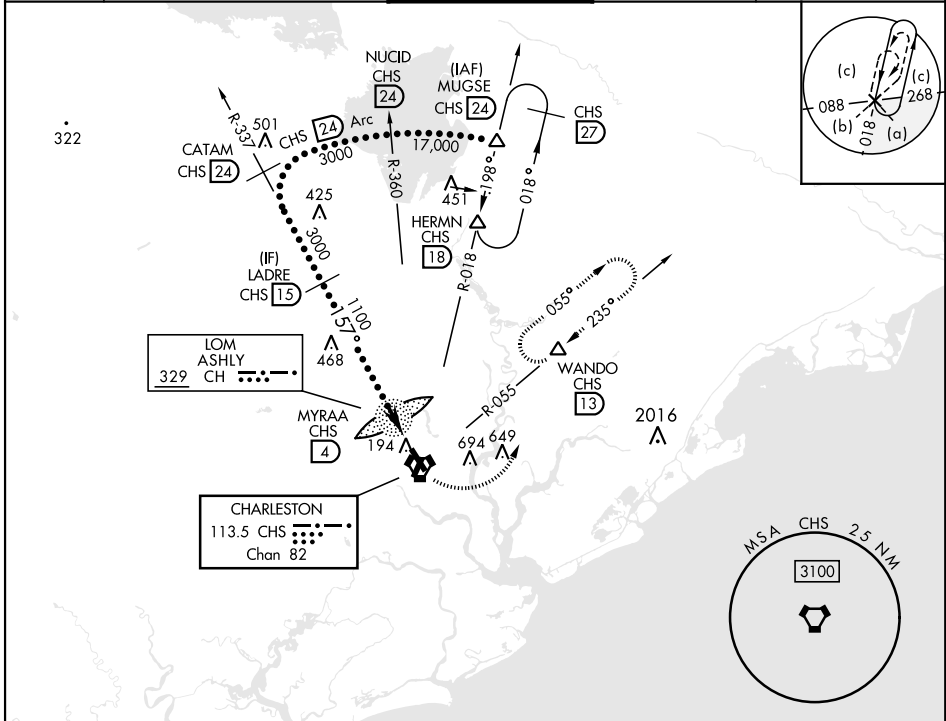


HI-VOR Z or TACAN Z RWY 15

VORTAC CHS 113.5 Chan 82	APCH CRS 157°	Rwy Idg TDZE 43 Arpt Elev 46	[USAF]	CHARLESTON AFB/INTL (KCHS)
DME required * When ALS inop, increase CAT CDE RVR to 60, vis to 1½ miles.			ALSF-2	MISSED APPROACH: Climb to 500 then climbing left turn to 3500 on CHS VORTAC R-055 to WANDO/CHS 13 DME and hold, continue climb-in-hold to 3500.

ATIS 124.75	APP CON 120.7 306.925 (151° - 330°) 121.275 379.925 (331° - 150°)	TOWER 126.0 239.0	GND CON 121.9 348.6	CLNC DEL 127.325 291.65
-----------------------	---	-----------------------------	-------------------------------	-----------------------------------



HI-VOR Z or TACAN Z RWY 15