

APP CRS	Rwy Idg	3985
002°	TDZE	1001
	Apt Elev	1003

RNAV (GPS) RWY 36

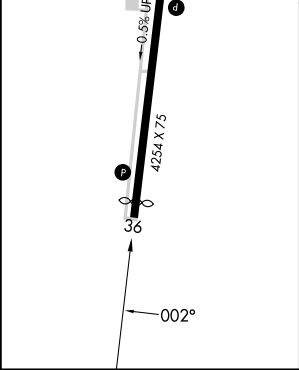
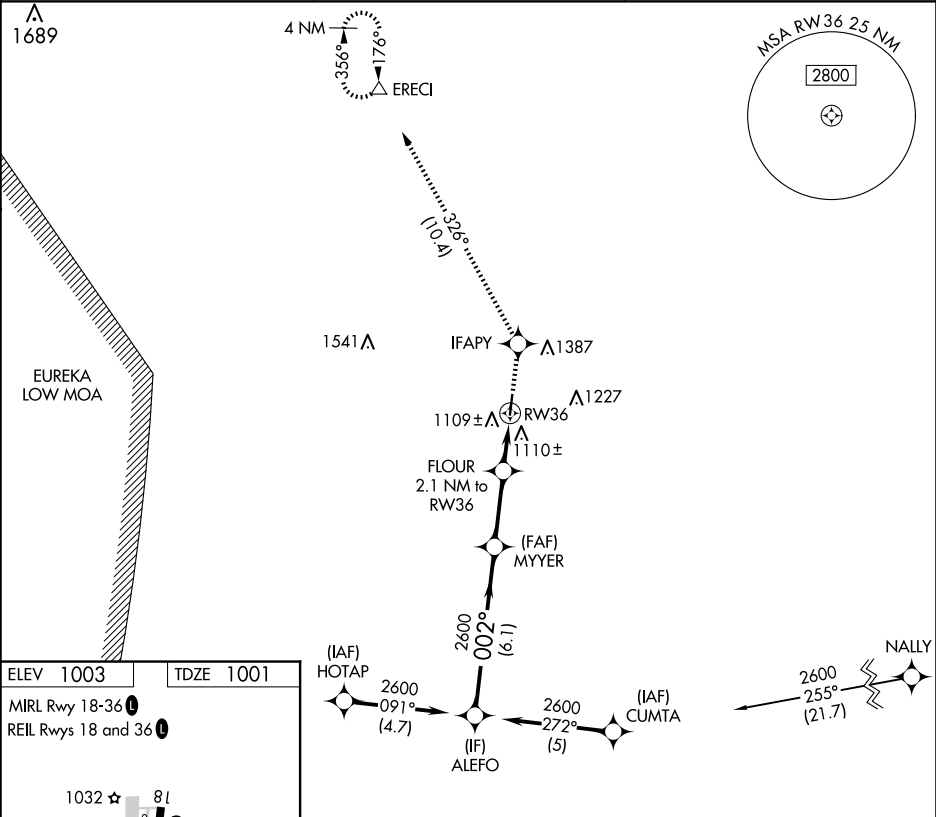
CHANUTE MARTIN JOHNSON (CNU)

RNP APCH - GPS.

Procedure NA at night. Rwy 36 helicopter visibility reduction below 1 SM NA.

MISSED APPROACH: Climb to 2900 direct IFAPY and on track 326° to ERECI and hold.

ASOS 127.075	KANSAS CITY CENTER 132.9 279.5	UNICOM 122.7 (CTAF) 0
-----------------	-----------------------------------	--------------------------



VGSIs and descent angles not coincident (VGSIs Angle 3.00/TCH 40).			
ALEFO	MYER	2900 IFAPY	ERECI
2600	002°	tr 326°	△
2600	3.04° TCH 36	FLOUR 2.1 NM to RW36	RW36
1700			
6.1 NM	2.7 NM	2.1 NM	
CATEGORY	A	B	C
LNAV MDA	1400-1	399 (400-1)	NA
CIRCLING	1480-1 477 (500-1)	1620-1 617 (700-1)	NA