

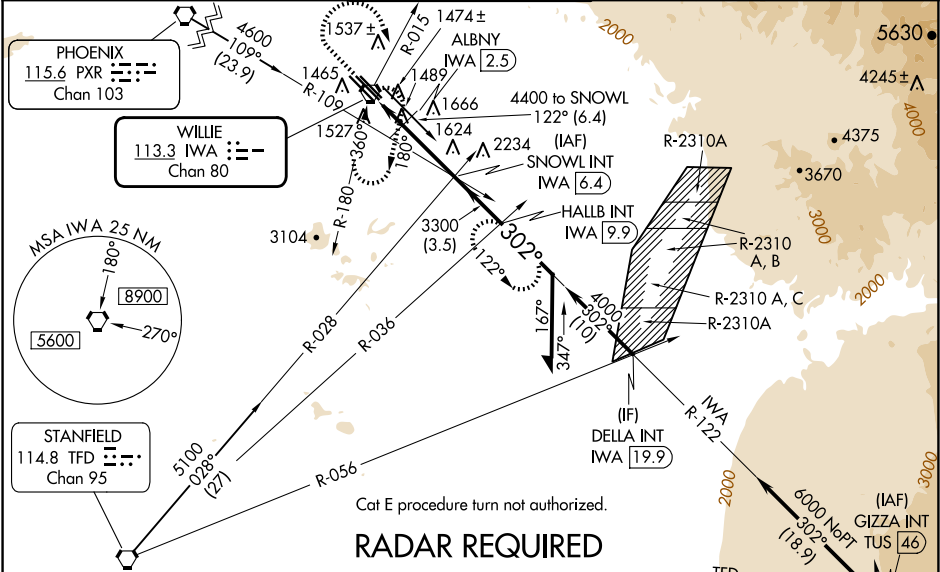
VORTAC IWA 113.3 Chan 80	APP CRS 302°	Rwy Idg TDZE Apt Elev	30C 10201 1380 1384	30R 9301 1382 1384
--	------------------------	-----------------------------	---	--

VOR or TACAN RWY 30C
MESA GATEWAY (IWA)

⚠ When local altimeter setting not received, use Phoenix Sky Harbor Intl altimeter setting and increase all MDA 80 feet, increase S-30C, SIDESTEP 30R, and Circling Cats C/D/E visibility ¼ SM.

MISSED APPROACH: Climb to 2800 then climbing right turn to 5000 via heading 145° and IWA VORTAC R-015 to IWA VORTAC and hold, continue climb-in-hold to 5000 (TACAN aircraft continue via IWA VORTAC R-122 to HALLB INT/IWA 9.9 DME and hold, continue climb-in-hold to 5000, hold SE, LT, 302° inbound).

ATIS 133.5 270.275	PHOENIX APP CON 124.9 353.8	GATEWAY TOWER ★ 120.6 (CTAF) 289.4	GND CON 128.25 275.8	CLNC DEL 135.05
------------------------------	---------------------------------------	--	--------------------------------	---------------------------



2800 5000 IWA IWA SNOWL INT IWA 6.4

↑ hdg 145° R-015

IWA VORTAC IWA 0.6 ALBANY IWA 1.7 IWA 2.5

≤ 3.03° TCH 49

1940* 3300 3700

1.2 NM 0.7 3.9 NM

Remain within 10 NM

* 2020 when using Phoenix Sky Harbor Intl altimeter setting.

CATEGORY	A	B	C	D	E
S-30C	1940-1 560 (600-1)		1940-1½ 560 (600-1½)	1940-1¾ 560 (600-1¾)	1940-2 560 (600-2)
SIDESTEP 30R	1940-1 558 (600-1)		1940-1½ 558 (600-1½)	1940-2 558 (600-2)	
CIRCLING	1940-1 556 (600-1)		1940-1½ 556 (600-1½)	2000-2 616 (700-2)	2020-2¼ 636 (700-2¼)
DME MINIMUMS					
S-30C	1800-1 420 (500-1)		1800-1¼ 420 (500-1¼)		1800-1½ 420 (500-1½)
SIDESTEP 30R	1800-1 418 (500-1)		1800-1½ 418 (500-1½)	1800-2 418 (500-2)	
CIRCLING	1880-1 496 (500-1)		1880-1½ 496 (500-1½)	2000-2 616 (700-2)	2020-2¼ 636 (700-2¼)

ELEV 1384 **D** TDZE 30C 1380 TDZE 30R 1382

HIRL Rwy 12L-30R and 12C-30C
REIL Rwy 12L and 30R
MIRL Rwy 12R-30L

TUCSON 116.0 TUS Chan 107

TWR 1496

FAF to MAP 5.8 NM

Knots	60	90	120	150	180
Min:Sec	5:48	3:52	2:54	2:19	1:56

SW-4, 10 JUL 2025 to 07 AUG 2025

SW-4, 10 JUL 2025 to 07 AUG 2025